



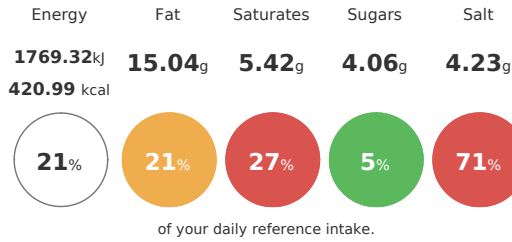
Recipe Ingredients and Nutrition

## Lighter Bites

# 360 - BREAKFAST - BACON ROLL 24

Serves	Total Recipe Cost	Cost Per Serving
<b>100</b>	<b>£0.00</b>	<b>£0.00</b>

Each serving contains:



## Nutritional Summary

Energy	1769.32kJ 420.99kCal
Protein	27.43g
Carbohydrates	43.44g
of which sugars	4.06g
Non Milk Extrinsic Sugars	0g
Fat	15.04g
of which saturates	5.42g
Fibre	3.14g
Salt	4.23g
Sodium	320.16g
Iron	0mg
Calcium	0mg
Zinc	0mg
Folate	0µg
Vitamin A	0µg
Vitamin C	0mg

## Allergy Information

Key: **Contains** **May Contain**

<b>Contains</b> Cereal	Does Not Contain Milk	Does Not Contain Eggs	Does Not Contain Peanuts	Does Not Contain Nuts
Does Not Contain Crustaceans	Does Not Contain Mustard	Does Not Contain Fish	Does Not Contain Lupin	<b>May Contain</b> Sesame
Does Not Contain Celery	Does Not Contain Soya	Does Not Contain Molluscs	Does Not Contain SO2	

## Dietary Information

Key: **Suitable for**

May not be suitable for Vegetarian	May not be suitable for Vegan	May not be suitable for Kosher	May not be suitable for Halal
---------------------------------------	----------------------------------	-----------------------------------	----------------------------------

---

## Sub-allergy Information

<b>Nuts:</b>		<b>Cereals:</b>	
Almond Nuts:	No	Wheat:	Yes
Hazelnuts:	No	Rye:	No
Walnuts:	No		
Cashew Nuts:	No	Oats:	No
Pecan Nuts:	No	Barley:	No
Brazil Nuts:	No		
Pistachio Nuts:	No		

---

## Ingredients

<b>Product</b>	<b>Quantity</b>
A1 Foodservice rindless back bacon 4 x 2.27 Kg with added water 4.5 mm	113.50 g
Kara MK5 Premium Floured Bap 6 x 8	92.00 g

---

## Label Information

### Ingredients

Kara MK5 Premium Floured Bap 6 x 8 (45%) (**WHEAT** Flour, (**WHEAT** Flour, Calcium Carbonate, Iron, Niacin & Thiamin), Water, Sugar, Salt, Yeast, Rapeseed Oil, Emulsifiers: E471, E472(e). Flour Treatment Agents: E300, E920.). A1 Foodservice rindless back bacon 4 x 2.27 Kg with added water 4.5 mm (55%) (Pork 85% Water Salt, Preservatives Sodium Nitrite E250 Potassium Nitrate E252 Antioxidant Sodium Ascorbate E301).

---

## Method & Recipe Notes

---

The information on the Erudus System has been supplied by the manufacturers of the products and, whilst the owners of the Erudus System take steps to ensure the information is regularly updated, they give no warranty and no guarantee that the information is accurate. Product information and ingredients may change, please always read product labels carefully in addition to using the information provide by Erudus.

We do not accept liability for any inaccuracies or incorrect information contained on this site. Please visit <http://www.erudus.com/terms-and-conditions> for full terms and conditions

# 360 - BREAKFAST - SAUSAGE ROLL 24

Serves	Total Recipe Cost	Cost Per Serving
<b>100</b>	<b>£0.00</b>	<b>£0.00</b>

Each serving contains:

Energy	Fat	Saturates	Sugars	Salt
<b>1672.52</b> kJ <b>403.76</b> kcal	<b>14.14</b> g	<b>4.64</b> g	<b>3.66</b> g	<b>0.91</b> g
<b>20%</b>	<b>20%</b>	<b>23%</b>	<b>4%</b>	<b>15%</b>

of your daily reference intake.

## Nutritional Summary

Energy	1672.52kJ 403.76kCal
Protein	16.56g
Carbohydrates	52.2g
of which sugars	3.66g
Non Milk Extrinsic Sugars	0g
Fat	14.14g
of which saturates	4.64g
Fibre	2.91g
Salt	0.91g
Sodium	320.17g
Iron	0.25mg
Calcium	11.76mg
Zinc	0.42mg
Folate	1.68µg
Vitamin A	0µg
Vitamin C	0mg

## Allergy Information

Key: **Contains** **May Contain**

<b>Contains</b> Cereal	Does Not Contain Milk	Does Not Contain Eggs	Does Not Contain Peanuts	Does Not Contain Nuts
Does Not Contain Crustaceans	Does Not Contain Mustard	Does Not Contain Fish	Does Not Contain Lupin	<b>May Contain</b> Sesame
Does Not Contain Celery	<b>Contains</b> Soya	Does Not Contain Molluscs	<b>Contains</b> SO2	

## Dietary Information

Key: **Suitable for**

May not be suitable for Vegetarian	May not be suitable for Vegan	May not be suitable for Kosher	May not be suitable for Halal
---------------------------------------	----------------------------------	-----------------------------------	----------------------------------

---

## Sub-allergy Information

Nuts:		Cereals:	
Almond Nuts:	No	Wheat:	Yes
Hazelnuts:	No	Rye:	No
Walnuts:	No		
Cashew Nuts:	No	Oats:	No
Pecan Nuts:	No	Barley:	No
Brazil Nuts:	No		
Pistachio Nuts:	No		

---

## Ingredients

Product	Quantity
PENNY LANE PORK SAUSAGE 4.54 Pork 16s	84.00 g
Kara MK5 Premium Floured Bap 6 x 8	92.00 g

---

## Label Information

### Ingredients

Kara MK5 Premium Floured Bap 6 x 8 (52%) **WHEAT** Flour, (**WHEAT** Flour, Calcium Carbonate, Iron, Niacin & Thiamin), Water, Sugar, Salt, Yeast, Rapeseed Oil, Emulsifiers: E471, E472(e). Flour Treatment Agents: E300, E920.). PENNY LANE PORK SAUSAGE 4.54 Pork 16s (48%) (Pork (42%), Water, Rusk (**WHEAT**), Mechanically recovered chicken, Vegetable starch, Pork fat, Salt, **WHEAT** flour (Contains Calcium Carbonate, Iron, Niacin, Vitamin B1), Dextrose, Stabiliser (Sodium Tri-polyphosphate (E451i)), Flavour enhancer (Monosodium Glutamate (E621)), Preservative (Sodium **SULPHITE** (E221)), Hydrolysed vegetable protein (**SOYA**), Antioxidant: Ascorbic Acid (E300), Spice extracts.).

---

## Method & Recipe Notes

The information on the Erudus System has been supplied by the manufacturers of the products and, whilst the owners of the Erudus System take steps to ensure the information is regularly updated, they give no warranty and no guarantee that the information is accurate. Product information and ingredients may change, please always read product labels carefully in addition to using the information provide by Erudus.

We do not accept liability for any inaccuracies or incorrect information contained on this site. Please visit <http://www.erudus.com/terms-and-conditions> for full terms and conditions

# 360 - LB - 2 SLICES OF TOAST 24

Serves	Total Recipe Cost	Cost Per Serving
<b>100</b>	<b>£0.00</b>	<b>£0.00</b>

Each serving contains:

Energy	Fat	Saturates	Sugars	Salt
<b>1140.56</b> kJ <b>270.82</b> kcal	<b>7.15</b> g	<b>4.09</b> g	<b>14.39</b> g	<b>0.82</b> g
<b>14%</b>	<b>10%</b>	<b>20%</b>	<b>16%</b>	<b>14%</b>

of your daily reference intake.

## Nutritional Summary

Energy	1140.56kJ 270.82kCal
Protein	5.86g
Carbohydrates	44.69g
of which sugars	14.39g
Non Milk Extrinsic Sugars	0g
Fat	7.15g
of which saturates	4.09g
Fibre	2.04g
Salt	0.82g
Sodium	273.6g
Iron	0mg
Calcium	0mg
Zinc	0mg
Folate	0µg
Vitamin A	0µg
Vitamin C	0mg

## Allergy Information

Key: **Contains** **May Contain**

<b>Contains</b> Cereal	<b>Contains</b> Milk	Does Not Contain Eggs	Does Not Contain Peanuts	Does Not Contain Nuts
Does Not Contain Crustaceans	Does Not Contain Mustard	Does Not Contain Fish	Does Not Contain Lupin	Does Not Contain Sesame
Does Not Contain Celery	<b>Contains</b> Soya	Does Not Contain Molluscs	Does Not Contain SO2	

## Dietary Information

Key: **Suitable for**

<b>Suitable for</b> Vegetarian	May not be suitable for Vegan	May not be suitable for Kosher	May not be suitable for Halal
-----------------------------------	----------------------------------	-----------------------------------	----------------------------------

---

## Sub-allergy Information

<b>Nuts:</b>		<b>Cereals:</b>	
Almond Nuts:	No	Wheat:	Yes
Hazelnuts:	No	Rye:	No
Walnuts:	No		
Cashew Nuts:	No	Oats:	No
Pecan Nuts:	No	Barley:	No
Brazil Nuts:	No		
Pistachio Nuts:	No		

---

## Ingredients

<b>Product</b>	<b>Quantity</b>
Lakeland Dairies Butter Portions (6x100)	7.00 g
Menz & Gasser Assorted Jam	20.00 g
Kingsmill Professional Soft White Bread 800g thick sliced	72.00 g

---

## Label Information

### Ingredients

Lakeland Dairies **Butter** Portions (6x100) (7%) (**Butter (MILK)** (Min fat content 80%), Salt.). Menz & Gasser Assorted Jam (20%) (Glucose-fructose syrup, Blackcurrants, Sugar, Water, Gelling agent(Pectin), Acidity regulator(Citric acid),Glucose-fructose syrup, Raspberries, Sugar, Water, Gelling agent(Pectin), Acidity regulator( Citric acid),Glucose-fructose syrup, Apricots, Sugar, Water, Gelling agent(Pectin), Acidity regulator( Citric acid),Glucose-fructose syrup, Strawberries, Sugar, Water, Gelling agent(Pectin), Acidity regulator( Citric acid), Elderberry juice.). Kingsmill Professional Soft White Bread 800g thick sliced (73%) (**WHEAT** Flour (with calcium, iron, niacin (B3) and thiamin (B1)), Water, Yeast, Salt, Vegetable Oils (Rapeseed, Sustainable Palm), Sustainable**SOYA** Flour, Vinegar, Preservative: Calcium Propionate. Emulsifier: E472e. Flour Treatment Agent: Ascorbic Acid (Vitamin C)).

---

## Method & Recipe Notes

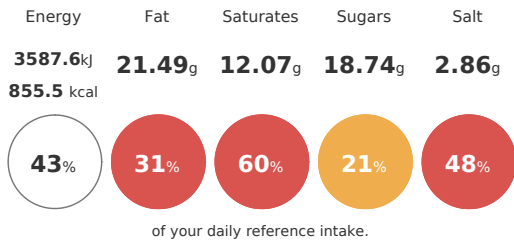
The information on the Erudus System has been supplied by the manufacturers of the products and, whilst the owners of the Erudus System take steps to ensure the information is regularly updated, they give no warranty and no guarantee that the information is accurate. Product information and ingredients may change, please always read product labels carefully in addition to using the information provide by Erudus.

We do not accept liability for any inaccuracies or incorrect information contained on this site. Please visit <http://www.erudus.com/terms-and-conditions> for full terms and conditions

# 360 - LB JACKET CHEESE BEANS 24

Serves	Total Recipe Cost	Cost Per Serving
<b>100</b>	<b>£0.00</b>	<b>£0.00</b>

Each serving contains:



## Nutritional Summary

Energy	3587.6kj 855.5kCal
Protein	36.23g
Carbohydrates	117.6g
of which sugars	18.74g
Non Milk Extrinsic Sugars	0g
Fat	21.49g
of which saturates	12.07g
Fibre	22.92g
Salt	2.86g
Sodium	940g
Iron	0mg
Calcium	0mg
Zinc	0mg
Folate	0µg
Vitamin A	0µg
Vitamin C	0mg

## Allergy Information

Key: **Contains** **May Contain**

Does Not Contain Cereal	<b>Contains Milk</b>	Does Not Contain Eggs	Does Not Contain Peanuts	Does Not Contain Nuts
Does Not Contain Crustaceans	Does Not Contain Mustard	Does Not Contain Fish	Does Not Contain Lupin	Does Not Contain Sesame
Does Not Contain Celery	Does Not Contain Soya	Does Not Contain Molluscs	Does Not Contain SO2	

## Dietary Information

Key: **Suitable for**

Suitable for Vegetarian	May not be suitable for Vegan	May not be suitable for Kosher	May not be suitable for Halal



---

## Sub-allergy Information

<b>Nuts:</b>		<b>Cereals:</b>	
Almond Nuts:	No	Wheat:	No
Hazelnuts:	No	Rye:	No
Walnuts:	No		
Cashew Nuts:	No	Oats:	No
Pecan Nuts:	No	Barley:	No
Brazil Nuts:	No		
Pistachio Nuts:	No		

---

## Ingredients

<b>Product</b>	<b>Quantity</b>
3 x 10* Extra Large Ready Baked Jacket Potatoes (2.8kg e)	500.00 g
CSBC 10031 Baked Beans in Tomato Sauce 2620g	160.00 g
Grated Mozzarella/Cheddar 70/30	70.00 g

---

## Label Information

### Ingredients

Grated **Mozzarella/Cheddar 70/30** (10%) (**mozzarella (MILK)** 70%, **cheddar (MILK)** 30%, anti-caking agent (Potato Starch)). 3 x 10\* Extra Large Ready Baked Jacket Potatoes (2.8kg e) (68%) (British Potato (100%)). CSBC 10031 Baked Beans in Tomato Sauce 2620g (22%) (Haricot Beans (49%), Tomatoes (27%), Water, Sugar, Modified Maize Starch, Salt, Glucose-Fructose Syrup, Onion Powder, Paprika, Flavourings.).

---

## Method & Recipe Notes

---

The information on the Erudus System has been supplied by the manufacturers of the products and, whilst the owners of the Erudus System take steps to ensure the information is regularly updated, they give no warranty and no guarantee that the information is accurate. Product information and ingredients may change, please always read product labels carefully in addition to using the information provide by Erudus.

We do not accept liability for any inaccuracies or incorrect information contained on this site. Please visit <http://www.erudus.com/terms-and-conditions> for full terms and conditions

# 360 - LB JACKET POTATO TUNA MAYO 24

Serves

**1**

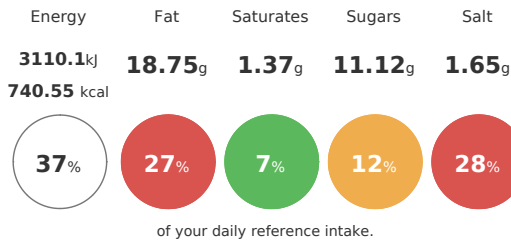
Total Recipe Cost

**£0.00**

Cost Per Serving

**£0.00**

Each serving contains:



## Nutritional Summary

Energy	3110.1kJ 740.55kCal
Protein	34.39g
Carbohydrates	99.67g
of which sugars	11.12g
Non Milk Extrinsic Sugars	0g
Fat	18.75g
of which saturates	1.37g
Fibre	17.11g
Salt	1.65g
Sodium	405g
Iron	0mg
Calcium	0mg
Zinc	0mg
Folate	0µg
Vitamin A	0µg
Vitamin C	0mg

## Allergy Information

Key: **Contains** **May Contain**

Does Not Contain Cereal	Does Not Contain Milk	<b>Contains Eggs</b>	Does Not Contain Peanuts	Does Not Contain Nuts
Does Not Contain Crustaceans	Does Not Contain Mustard	<b>Contains Fish</b>	Does Not Contain Lupin	Does Not Contain Sesame
Does Not Contain Celery	Does Not Contain Soya	Does Not Contain Molluscs	Does Not Contain SO2	

## Dietary Information

Key: **Suitable for**

May not be suitable for Vegetarian	May not be suitable for Vegan	May not be suitable for Kosher	May not be suitable for Halal

---

## Sub-allergy Information

<b>Nuts:</b>		<b>Cereals:</b>	
Almond Nuts:	No	Wheat:	No
Hazelnuts:	No	Rye:	No
Walnuts:	No		
Cashew Nuts:	No	Oats:	No
Pecan Nuts:	No	Barley:	No
Brazil Nuts:	No		
Pistachio Nuts:	No		

---

## Ingredients

<b>Product</b>	<b>Quantity</b>
3 x 10* Extra Large Ready Baked Jacket Potatoes (2.8kg e)	500.00 g
CSBC 11117 Skipjack Tuna Chunks in Brine	95.00 g
CSBC 10057 Real Mayonnaise 5l	35.00 g

---

## Label Information

### Ingredients

3 x 10\* Extra Large Ready Baked Jacket Potatoes (2.8kg e) (79%) (British Potato (100%)). CSBC 11117 Skipjack **Tuna** Chunks in Brine (15%) (Skipjack **Tuna** (katsuwonus pelamis) (**FISH**), Water, Salt). CSBC 10057 Real Mayonnaise 5l (6%) (Rapeseed Oil, Water, Spirit Vinegar, Stabilisers (Modified Potato Starch, Xanthan Gum), Sugar, Salt, Pasteurised **EGG**, Preservative (Potassium Sorbate)).

---

## Method & Recipe Notes

---

The information on the Erudus System has been supplied by the manufacturers of the products and, whilst the owners of the Erudus System take steps to ensure the information is regularly updated, they give no warranty and no guarantee that the information is accurate. Product information and ingredients may change, please always read product labels carefully in addition to using the information provide by Erudus.

We do not accept liability for any inaccuracies or incorrect information contained on this site. Please visit <http://www.erudus.com/terms-and-conditions> for full terms and conditions

# 360 - LB MIXED SALAD 24

Serves	Total Recipe Cost	Cost Per Serving
<b>100</b>	<b>£0.00</b>	<b>£0.00</b>

Each serving contains:

Energy	Fat	Saturates	Sugars	Salt
<b>70.4kj</b> <b>16.8 kcal</b>	<b>0.19g</b>	<b>0.03g</b>	<b>1.35g</b>	<b>0g</b>
<b>1%</b>	<b>0%</b>	<b>0%</b>	<b>2%</b>	<b>0%</b>

of your daily reference intake.

## Nutritional Summary

Energy	70.4kj 16.8kCal
Protein	0.95g
Carbohydrates	1.86g
of which sugars	1.35g
Non Milk Extrinsic Sugars	0g
Fat	0.19g
of which saturates	0.03g
Fibre	1.05g
Salt	0g
Sodium	0g
Iron	0mg
Calcium	0mg
Zinc	0mg
Folate	0µg
Vitamin A	0µg
Vitamin C	0mg

## Allergy Information

Key: Contains May Contain

Does Not Contain Cereal	Does Not Contain Milk	Does Not Contain Eggs	Does Not Contain Peanuts	Does Not Contain Nuts
Does Not Contain Crustaceans	Does Not Contain Mustard	Does Not Contain Fish	Does Not Contain Lupin	Does Not Contain Sesame
Does Not Contain Celery	Does Not Contain Soya	Does Not Contain Molluscs	Does Not Contain SO2	

## Dietary Information

Key: Suitable for

Suitable for Vegetarian	Suitable for Vegan	May not be suitable for Kosher	May not be suitable for Halal

---

## Sub-allergy Information

<b>Nuts:</b>		<b>Cereals:</b>	
Almond Nuts:	No	Wheat:	No
Hazelnuts:	No	Rye:	No
Walnuts:	No		
Cashew Nuts:	No	Oats:	No
Pecan Nuts:	No	Barley:	No
Brazil Nuts:	No		
Pistachio Nuts:	No		

---

## Ingredients

<b>Product</b>	<b>Quantity</b>
Europa Salad Mix	30.00 g
Cucumber	35.00 g
Cherry Tomato	25.00 g

---

## Label Information

### Ingredients

Cucumber (39%) (Cucumber). Europa Salad Mix (33%) (Lollo Rosso, Endive, Apollo, Red Chard). Cherry Tomato (28%) (Cherry Tomato).

---

## Method & Recipe Notes

---

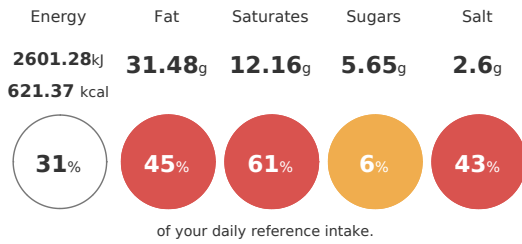
The information on the Erudus System has been supplied by the manufacturers of the products and, whilst the owners of the Erudus System take steps to ensure the information is regularly updated, they give no warranty and no guarantee that the information is accurate. Product information and ingredients may change, please always read product labels carefully in addition to using the information provide by Erudus.

We do not accept liability for any inaccuracies or incorrect information contained on this site. Please visit <http://www.erudus.com/terms-and-conditions> for full terms and conditions

# 360 - PANINI - TOMATO MOZZ PESTO 24

Serves	Total Recipe Cost	Cost Per Serving
<b>100</b>	<b>£0.40</b>	<b>£0.40</b>

Each serving contains:



## Nutritional Summary

Energy	2601.28kJ 621.37kCal
Protein	23.27g
Carbohydrates	59.55g
of which sugars	5.65g
Non Milk Extrinsic Sugars	0g
Fat	31.48g
of which saturates	12.16g
Fibre	4.25g
Salt	2.6g
Sodium	0g
Iron	0mg
Calcium	0mg
Zinc	0mg
Folate	0µg
Vitamin A	0µg
Vitamin C	0mg

## Allergy Information

Key: **Contains** **May Contain**

<b>Contains</b> Cereal	<b>Contains</b> Milk	<b>May Contain</b> Eggs	Does Not Contain Peanuts	Does Not Contain Nuts
Does Not Contain Crustaceans	Does Not Contain Mustard	Does Not Contain Fish	Does Not Contain Lupin	<b>May Contain</b> Sesame
Does Not Contain Celery	Does Not Contain Soya	Does Not Contain Molluscs	<b>Contains</b> SO2	

## Dietary Information

Key: **Suitable for**

<b>Suitable for</b> Vegetarian	May not be suitable for Vegan	May not be suitable for Kosher	May not be suitable for Halal

---

## Sub-allergy Information

<b>Nuts:</b>		<b>Cereals:</b>	
Almond Nuts:	No	Wheat:	Yes
Hazelnuts:	No	Rye:	No
Walnuts:	No		
Cashew Nuts:	No	Oats:	No
Pecan Nuts:	No	Barley:	No
Brazil Nuts:	No		
Pistachio Nuts:	No		

---

## Ingredients

<b>Product</b>	<b>Quantity</b>
CSBC 10418 - 60 Panini 110g	110.00 g
CSBC 10055 Green Pesto 6 x 1.12kg	35.00 g
Grated Mozzarella/Cheddar 70/30	56.00 g
Fresh Tomato	20.00 g

---

## Label Information

### Ingredients

Grated **Mozzarella/Cheddar** 70/30 (25%) (**mozzarella (MILK)** 70%, **cheddar (MILK)** 30%, anti-caking agent (Potato Starch)). CSBC 10055 Green Pesto 6 x 1.12kg (16%) (Chopped Basil (41%), Rapeseed Oil, Olive Oil, Medium Fat Hard**Cheese (MILK)**, Water, Sugar, Salt, Garlic Purée, Acidity Regulator (Lactic Acid), Potato Powder (**SULPHITES**), Black Pepper.). Fresh Tomato (9%) (Fresh Tomato Sliced). CSBC 10418 - 60 Panini 110g (50%)**WHEAT** Flour, Water, Yeast, Salt, Olive Oil, **WHEAT** Gluten, Malted **WHEAT** Flour, Flour Treatment Agent (Ascorbic Acid ).).

---

## Method & Recipe Notes

---

The information on the Erudus System has been supplied by the manufacturers of the products and, whilst the owners of the Erudus System take steps to ensure the information is regularly updated, they give no warranty and no guarantee that the information is accurate. Product information and ingredients may change, please always read product labels carefully in addition to using the information provide by Erudus.

We do not accept liability for any inaccuracies or incorrect information contained on this site. Please visit <http://www.erudus.com/terms-and-conditions> for full terms and conditions

# 360 - PANINI BBQ CHICKEN CHEESE 24

Serves	Total Recipe Cost	Cost Per Serving
<b>100</b>	<b>£0.00</b>	<b>£0.00</b>

Each serving contains:

Energy	Fat	Saturates	Sugars	Salt
<b>3036.88</b> kJ <b>716.42</b> kcal	<b>19.08</b> g	<b>10.76</b> g	<b>25.08</b> g	<b>3.11</b> g
<b>36%</b>	<b>27%</b>	<b>54%</b>	<b>28%</b>	<b>52%</b>

of your daily reference intake.

## Nutritional Summary

Energy	3036.88kJ 716.42kCal
Protein	50.12g
Carbohydrates	84.06g
of which sugars	25.08g
Non Milk Extrinsic Sugars	0g
Fat	19.08g
of which saturates	10.76g
Fibre	4.37g
Salt	3.11g
Sodium	462g
Iron	0mg
Calcium	0mg
Zinc	0mg
Folate	0µg
Vitamin A	0µg
Vitamin C	0mg

## Allergy Information

Key: **Contains** **May Contain**

<b>Contains</b> Cereal	<b>Contains</b> Milk	<b>May Contain</b> Eggs	Does Not Contain Peanuts	Does Not Contain Nuts
Does Not Contain Crustaceans	Does Not Contain Mustard	Does Not Contain Fish	Does Not Contain Lupin	<b>May Contain</b> Sesame
Does Not Contain Celery	Does Not Contain Soya	Does Not Contain Molluscs	Does Not Contain SO2	

## Dietary Information

Key: **Suitable for**

May not be suitable for Vegetarian	May not be suitable for Vegan	May not be suitable for Kosher	May not be suitable for Halal



---

## Sub-allergy Information

<b>Nuts:</b>		<b>Cereals:</b>	
Almond Nuts:	No	Wheat:	Yes
Hazelnuts:	No	Rye:	No
Walnuts:	No		
Cashew Nuts:	No	Oats:	No
Pecan Nuts:	No	Barley:	No
Brazil Nuts:	No		
Pistachio Nuts:	No		

---

## Ingredients

<b>Product</b>	<b>Quantity</b>
CSBC 10418 - 60 Panini 110g	110.00 g
CSBC 10272 Frozen Chicken Breast Strips 12mm (4 x 2.5kg)	90.00 g
Grated Mozzarella/Cheddar 70/30	56.00 g
CSBC 10913 Sticky BBQ Sauce	60.00 g

---

## Label Information

### Ingredients

CSBC 10272 Frozen Chicken Breast Strips 12mm (4 x 2.5kg) (28%) (Chicken, Salt Made with 114g of raw chicken per 100g of finished product). Grated **Mozzarella/Cheddar 70/30** (18%) (**mozzarella (MILK)** 70%, **cheddar (MILK)** 30%, anti-caking agent (Potato Starch)). CSBC 10418 - 60 Panini 110g (35%) (**WHEAT** Flour, Water, Yeast, Salt, Olive Oil, **WHEAT** Gluten, Malted **WHEAT** Flour, Flour Treatment Agent (Ascorbic Acid)). CSBC 10913 Sticky BBQ Sauce (19%) (Water, Sugar, Tomato Paste, Glucose-Fructose Syrup, Modified Maize Starch, Acidity Regulators (Acetic Acid, Citric Acid), Seasoning Blend (Salt, Paprika, Garlic, Onion, Black Pepper, Cayenne), Apple Juice Concentrate, Caramelised Sugar Syrup, Flavourings (Smoke Flavouring, Flavouring), Preservative (Potassium Sorbate), Stabiliser (Xanthan Gum)).

---

## Method & Recipe Notes

The information on the Erudus System has been supplied by the manufacturers of the products and, whilst the owners of the Erudus System take steps to ensure the information is regularly updated, they give no warranty and no guarantee that the information is accurate. Product information and ingredients may change, please always read product labels carefully in addition to using the information provided by Erudus.

We do not accept liability for any inaccuracies or incorrect information contained on this site. Please visit <http://www.erudus.com/terms-and-conditions> for full terms and conditions

# 360 - PANINI CHEESE & TOMATO 24

Serves	Total Recipe Cost	Cost Per Serving
<b>100</b>	<b>£0.00</b>	<b>£0.00</b>

Each serving contains:

Energy	Fat	Saturates	Sugars	Salt
<b>2002.78</b> kJ <b>476.12</b> kcal	<b>16.81</b> g	<b>9.85</b> g	<b>4.6</b> g	<b>1.97</b> g
<b>24%</b>	<b>24%</b>	<b>49%</b>	<b>5%</b>	<b>33%</b>

of your daily reference intake.

## Nutritional Summary

Energy	2002.78kJ 476.12kCal
Protein	22.15g
Carbohydrates	57.66g
of which sugars	4.6g
Non Milk Extrinsic Sugars	0g
Fat	16.81g
of which saturates	9.85g
Fibre	3.65g
Salt	1.97g
Sodium	0g
Iron	0mg
Calcium	0mg
Zinc	0mg
Folate	0µg
Vitamin A	0µg
Vitamin C	0mg

## Allergy Information

Key: **Contains** **May Contain**

<b>Contains</b> Cereal	<b>Contains</b> Milk	<b>May Contain</b> Eggs	Does Not Contain Peanuts	Does Not Contain Nuts
Does Not Contain Crustaceans	Does Not Contain Mustard	Does Not Contain Fish	Does Not Contain Lupin	<b>May Contain</b> Sesame
Does Not Contain Celery	Does Not Contain Soya	Does Not Contain Molluscs	Does Not Contain SO2	

## Dietary Information

Key: **Suitable for**

<b>Suitable for</b> Vegetarian	May not be suitable for Vegan	May not be suitable for Kosher	May not be suitable for Halal

---

## Sub-allergy Information

<b>Nuts:</b>		<b>Cereals:</b>	
Almond Nuts:	No	Wheat:	Yes
Hazelnuts:	No	Rye:	No
Walnuts:	No		
Cashew Nuts:	No	Oats:	No
Pecan Nuts:	No	Barley:	No
Brazil Nuts:	No		
Pistachio Nuts:	No		

---

## Ingredients

<b>Product</b>	<b>Quantity</b>
CSBC 10418 - 60 Panini 110g	110.00 g
Grated Mozzarella/Cheddar 70/30	56.00 g
Fresh Tomato	20.00 g

---

## Label Information

### Ingredients

Grated **Mozzarella/Cheddar** 70/30 (30%) (**mozzarella (MILK)** 70%, **cheddar (MILK)** 30%, anti-caking agent (Potato Starch)). Fresh Tomato (11%) (Fresh Sliced Tomato). CSBC 10418 - 60 Panini 110g (59%) **WHEAT** Flour, Water, Yeast, Salt, Olive Oil, **WHEAT** Gluten, Malted **WHEAT** Flour, Flour Treatment Agent (Ascorbic Acid ).).

---

## Method & Recipe Notes

---

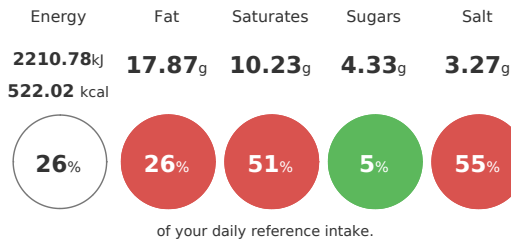
The information on the Erudus System has been supplied by the manufacturers of the products and, whilst the owners of the Erudus System take steps to ensure the information is regularly updated, they give no warranty and no guarantee that the information is accurate. Product information and ingredients may change, please always read product labels carefully in addition to using the information provide by Erudus.

We do not accept liability for any inaccuracies or incorrect information contained on this site. Please visit <http://www.erudus.com/terms-and-conditions> for full terms and conditions

# 360 - PANINI CHEESE AND HAM 24

Serves	Total Recipe Cost	Cost Per Serving
<b>100</b>	<b>£0.00</b>	<b>£0.00</b>

Each serving contains:



## Nutritional Summary

Energy	2210.78kJ 522.02kCal
Protein	31.53g
Carbohydrates	57.13g
of which sugars	4.33g
Non Milk Extrinsic Sugars	0g
Fat	17.87g
of which saturates	10.23g
Fibre	3.66g
Salt	3.27g
Sodium	0g
Iron	0mg
Calcium	0mg
Zinc	0mg
Folate	0µg
Vitamin A	0µg
Vitamin C	0mg

## Allergy Information

Key: **Contains** **May Contain**

<b>Contains</b> Cereal	<b>Contains</b> Milk	<b>May Contain</b> Eggs	Does Not Contain Peanuts	Does Not Contain Nuts
Does Not Contain Crustaceans	Does Not Contain Mustard	Does Not Contain Fish	Does Not Contain Lupin	<b>May Contain</b> Sesame
Does Not Contain Celery	Does Not Contain Soya	Does Not Contain Molluscs	Does Not Contain SO2	

## Dietary Information

Key: **Suitable for**

May not be suitable for Vegetarian	May not be suitable for Vegan	May not be suitable for Kosher	May not be suitable for Halal

---

## Sub-allergy Information

<b>Nuts:</b>		<b>Cereals:</b>	
Almond Nuts:	No	Wheat:	Yes
Hazelnuts:	No	Rye:	No
Walnuts:	No		
Cashew Nuts:	No	Oats:	No
Pecan Nuts:	No	Barley:	No
Brazil Nuts:	No		
Pistachio Nuts:	No		

---

## Ingredients

<b>Product</b>	<b>Quantity</b>
CSBC 10418 - 60 Panini 110g	110.00 g
Sliced Premium Honey Roast Ham (500g)	50.00 g
Grated Mozzarella/Cheddar 70/30	56.00 g

---

## Label Information

### Ingredients

Grated **Mozzarella/Cheddar 70/30** (26%) (**mozzarella (MILK)** 70%, **cheddar (MILK)** 30%, anti-caking agent (Potato Starch)), Sliced Premium Honey Roast Ham (500g) (23%) (EU Pork (85%), Water, Salt, Dried Glucose Syrup, Stabilisers (E451, E450, E452), Honey (0.2%), Demerara sugar, Antioxidant (E301), Preservative (E250)). CSBC 10418 - 60 Panini 110g (51%) **WHEAT** Flour, Water, Yeast, Salt, Olive Oil, **WHEAT** Gluten, Malted **WHEAT** Flour, Flour Treatment Agent (Ascorbic Acid ).

---

## Method & Recipe Notes

---

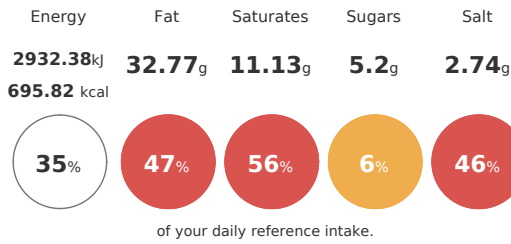
The information on the Erudus System has been supplied by the manufacturers of the products and, whilst the owners of the Erudus System take steps to ensure the information is regularly updated, they give no warranty and no guarantee that the information is accurate. Product information and ingredients may change, please always read product labels carefully in addition to using the information provide by Erudus.

We do not accept liability for any inaccuracies or incorrect information contained on this site. Please visit <http://www.erudus.com/terms-and-conditions> for full terms and conditions

# 360 - PANINI TUNA MAYO MOZZ 24

Serves	Total Recipe Cost	Cost Per Serving
<b>1</b>	<b>£0.00</b>	<b>£0.00</b>

Each serving contains:



## Nutritional Summary

Energy	2932.38kJ 695.82kCal
Protein	39.62g
Carbohydrates	59.05g
of which sugars	5.2g
Non Milk Extrinsic Sugars	0g
Fat	32.77g
of which saturates	11.13g
Fibre	3.52g
Salt	2.74g
Sodium	105g
Iron	0mg
Calcium	0mg
Zinc	0mg
Folate	0µg
Vitamin A	0µg
Vitamin C	0mg

## Allergy Information

Key: **Contains** **May Contain**

<b>Contains</b> Cereal	<b>Contains</b> Milk	<b>Contains</b> Eggs	Does Not Contain Peanuts	Does Not Contain Nuts
Does Not Contain Crustaceans	Does Not Contain Mustard	<b>Contains</b> Fish	Does Not Contain Lupin	<b>May Contain</b> Sesame
Does Not Contain Celery	Does Not Contain Soya	Does Not Contain Molluscs	Does Not Contain SO2	

## Dietary Information

Key: **Suitable for**

May not be suitable for Vegetarian	May not be suitable for Vegan	May not be suitable for Kosher	May not be suitable for Halal

---

## Sub-allergy Information

<b>Nuts:</b>		<b>Cereals:</b>	
Almond Nuts:	No	Wheat:	Yes
Hazelnuts:	No	Rye:	No
Walnuts:	No		
Cashew Nuts:	No	Oats:	No
Pecan Nuts:	No	Barley:	No
Brazil Nuts:	No		
Pistachio Nuts:	No		

---

## Ingredients

<b>Product</b>	<b>Quantity</b>
CSBC 10418 - 60 Panini 110g	110.00 g
CSBC 11117 Skipjack Tuna Chunks in Brine	70.00 g
Grated Mozzarella/Cheddar 70/30	56.00 g
CSBC 10057 Real Mayonnaise 5l	35.00 g

---

## Label Information

### Ingredients

CSBC 10418 - 60 Panini 110g (41%) **WHEAT** Flour, Water, Yeast, Salt, Olive Oil, **WHEAT** Gluten, Malted **WHEAT** Flour, Flour Treatment Agent (Ascorbic Acid ). CSBC 11117 Skipjack **Tuna** Chunks in Brine (26%) (Skipjack **Tuna** (katsuwonus pelamis) (**FISH**), Water, Salt). Grated **Mozzarella/Cheddar 70/30** (21%) (**mozzarella (MILK)** 70%, **cheddar (MILK)** 30%, anti-caking agent (Potato Starch)). CSBC 10057 Real Mayonnaise 5l (13%) (Rapeseed Oil, Water, Spirit Vinegar, Stabilisers (Modified Potato Starch, Xanthan Gum), Sugar, Salt, Pasteurised **EGG**, Preservative (Potassium Sorbate)).

---

## Method & Recipe Notes

The information on the Erudus System has been supplied by the manufacturers of the products and, whilst the owners of the Erudus System take steps to ensure the information is regularly updated, they give no warranty and no guarantee that the information is accurate. Product information and ingredients may change, please always read product labels carefully in addition to using the information provide by Erudus.

We do not accept liability for any inaccuracies or incorrect information contained on this site. Please visit <http://www.erudus.com/terms-and-conditions> for full terms and conditions