



Recipe Ingredients and Nutrition

Lighter Bites

360 - BREAKFAST - BACON ROLL

Ingredients

Product	Quantity
A1 Foodservice rindless back bacon 4 x 2.27 Kg with added water 4.5 mm	113.50 g
Kara MK5 Premium Floured Bap 6 x 8	92.00 g

Serves: 1

Allergy Information

Key: Contains May Contain

Contains Cereal	Does Not Contain Milk	Does Not Contain Eggs	Does Not Contain Peanuts	Does Not Contain Nuts	Does Not Contain Crustaceans	Does Not Contain Mustard
Does Not Contain Fish	Does Not Contain Lupin	May Contain Sesame	Does Not Contain Celery	Does Not Contain Soya	Does Not Contain Molluscs	Does Not Contain SO2

Nuts:

Almond Nuts:	No
Hazelnuts:	No
Walnuts:	No
Cashew Nuts:	No
Pecan Nuts:	No
Brazil Nuts:	No
Pistachio Nuts:	No

Cereals:

Wheat:	Yes
Rye:	No
Spelt:	No
Oats:	No
Barley:	No
Kamut:	No

Dietary Information

Key: Suitable for

May not be suitable for Vegetarian	May not be suitable for Vegan	May not be suitable for Kosher	May not be suitable for Halal
---------------------------------------	----------------------------------	-----------------------------------	----------------------------------

Label Information

Ingredients

A1 Foodservice rindless back bacon 4 x 2.27 Kg with added water 4.5 mm (55%) (Pork 85% Water Salt, Preservatives Sodium Nitrite E250 Potassium Nitrate E252 Antioxidant Sodium Ascorbate E301). Kara MK5 Premium Floured Bap 6 x 8 (45%) (**WHEAT** Flour, (**WHEAT** Flour, Calcium Carbonate, Iron, Niacin & Thiamin), Water, Sugar, Salt, Yeast, Rapeseed Oil, Emulsifiers: E471, E472(e). Flour Treatment Agents: E300, E920.).

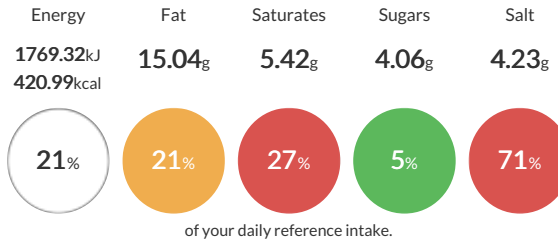
Method & Recipe Notes

The information on the Erudus System has been supplied by the manufacturers of the products and, whilst the owners of the Erudus System take steps to ensure the information is regularly updated, they give no warranty and no guarantee that the information is accurate. Product information and ingredients may change, please always read product labels carefully in addition to using the information provide by Erudus One.

We do not accept liability for any inaccuracies or incorrect information contained on this site. Please visit <http://www.erudus.com/terms-and-conditions> for full terms and conditions

Reference Intake

Each serving contains:



Nutritional Summary

Energy	1769.32kJ 420.99kCal
Protein	27.43g
Carbohydrates	43.44g
of which sugars	4.06g
Non Milk Extrinsic Sugars	0g
Fat	15.04g
of which saturates	5.42g
Fibre	2.58g
Salt	4.23g
Sodium	0.32g
Iron	0mg
Calcium	0mg
Zinc	0mg
Folate	0µg
Vitamin A	0µg
Vitamin C	0mg

360 - BREAKFAST - SAUSAGE ROLL

Ingredients

Product	Quantity
PENNY LANE PORK SAUSAGE 4.54 Pork 16s	84.00 g
Kara MK5 Premium Floured Bap 6 x 8	92.00 g

Serves: 1

Allergy Information

Key: Contains May Contain

Contains Cereal	Does Not Contain Milk	Does Not Contain Eggs	Does Not Contain Peanuts	Does Not Contain Nuts	Does Not Contain Crustaceans	Does Not Contain Mustard
Does Not Contain Fish	Does Not Contain Lupin	May Contain Sesame	Does Not Contain Celery	Contains Soya	Does Not Contain Molluscs	Contains SO2

Nuts:		Cereals:	
Almond Nuts:	No	Wheat:	Yes
Hazelnuts:	No	Rye:	No
Walnuts:	No	Spelt:	No
Cashew Nuts:	No	Oats:	No
Pecan Nuts:	No	Barley:	No
Brazil Nuts:	No	Kamut:	No
Pistachio Nuts:	No		

Dietary Information

Key: Suitable for

May not be suitable for Vegetarian	May not be suitable for Vegan	May not be suitable for Kosher	May not be suitable for Halal
------------------------------------	-------------------------------	--------------------------------	-------------------------------

Label Information

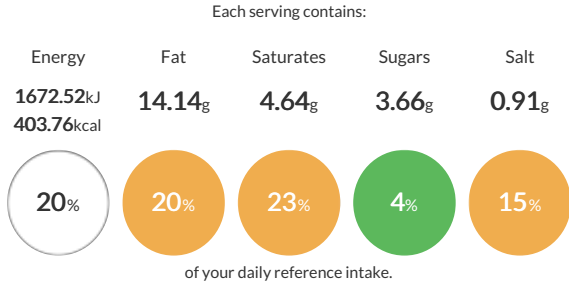
Ingredients
 Kara MK5 Premium Floured Bap 6 x 8 (52%) (**WHEAT** Flour, **WHEAT** Flour, Calcium Carbonate, Iron, Niacin & Thiamin), Water, Sugar, Salt, Yeast, Rapeseed Oil, Emulsifiers: E471, E472(e). Flour Treatment Agents: E300, E920.). PENNY LANE PORK SAUSAGE 4.54 Pork 16s (48%) (Pork (42%), Water, Rusk (**WHEAT**), Mechanically recovered chicken, Vegetable starch, Pork fat, Salt, **WHEAT** flour (Contains Calcium Carbonate, Iron, Niacin, Vitamin B1), Dextrose, Stabiliser (Sodium Tri-polyphosphate (E451i)), Flavour enhancer (Monosodium Glutamate (E621)), Preservative (Sodium **SULPHITE** (E221)), Hydrolysed vegetable protein (**SOYA**), Antioxidant: Ascorbic Acid (E300), Spice extracts.).

Method & Recipe Notes

The information on the Erudus System has been supplied by the manufacturers of the products and, whilst the owners of the Erudus System take steps to ensure the information is regularly updated, they give no warranty and no guarantee that the information is accurate. Product information and ingredients may change, please always read product labels carefully in addition to using the information provide by Erudus One.

We do not accept liability for any inaccuracies or incorrect information contained on this site. Please visit <http://www.erudus.com/terms-and-conditions> for full terms and conditions

Reference Intake



Nutritional Summary

Energy	1672.52kJ 403.76kCal
Protein	16.56g
Carbohydrates	52.2g
of which sugars	3.66g
Non Milk Extrinsic Sugars	0g
Fat	14.14g
of which saturates	4.64g
Fibre	2.91g
Salt	0.91g
Sodium	0.33g
Iron	0.25mg
Calcium	11.76mg
Zinc	0.42mg
Folate	1.68µg
Vitamin A	0µg
Vitamin C	0mg

360 - LB - 2 SLICES OF TOAST

Ingredients

Product	Quantity
800g 20+2 White [Box 10FR] [40PLT]	72.72 g
Lakeland Dairies Butter Portions (6x100)	7.00 g
Menz & Gasser Assorted Jam	20.00 g

Serves: 1

Allergy Information

Key: Contains May Contain

Contains Cereal	Contains Milk	Does Not Contain Eggs	Does Not Contain Peanuts	Does Not Contain Nuts	Does Not Contain Crustaceans	Does Not Contain Mustard
Does Not Contain Fish	Does Not Contain Lupin	Does Not Contain Sesame	Does Not Contain Celery	Contains Soya	Does Not Contain Molluscs	Does Not Contain SO2

Nuts:		Cereals:	
Almond Nuts:	No	Wheat:	Yes
Hazelnuts:	No	Rye:	May
Walnuts:	No	Spelt:	No
Cashew Nuts:	No	Oats:	May
Pecan Nuts:	No	Barley:	May
Brazil Nuts:	No	Kamut:	No
Pistachio Nuts:	No		

Dietary Information

Key: Suitable for

Suitable for Vegetarian	May not be suitable for Vegan	May not be suitable for Kosher	May not be suitable for Halal
-------------------------	-------------------------------	--------------------------------	-------------------------------

Label Information

Ingredients

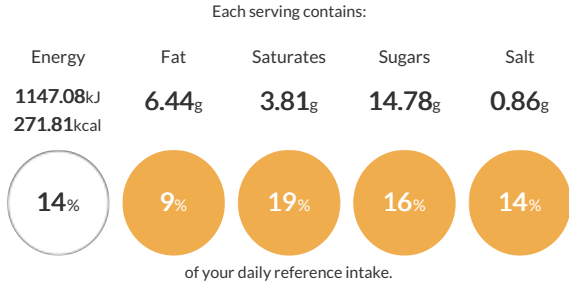
800g 20+2 White [Box 10FR] [40PLT] (73%) (**WHEAT** Flour (with added calcium, iron, niacin and thiamine), Water, Yeast, Salt, Emulsifier: E472e, **SOYA** Flour, Preservative: E282, Rapeseed Oil, Flour Treatment Agent: E300.), Menz & Gasser Assorted Jam (20%) (Glucose-fructose syrup, Blackcurrants, Sugar, Water, Gelling agent(Pectin), Acidity regulator(Citric acid), Glucose-fructose syrup, Raspberries, Sugar, Water, Gelling agent(Pectin), Acidity regulator(Citric acid), Glucose-fructose syrup, Apricots, Sugar, Water, Gelling agent(Pectin), Acidity regulator(Citric acid), Glucose-fructose syrup, Strawberries, Sugar, Water, Gelling agent(Pectin), Acidity regulator(Citric acid), Elderberry juice.), Lakeland Dairies **Butter** Portions (6x100) (7%) (**Butter (MILK)** (Min fat content 80%), Salt.).

Method & Recipe Notes

The information on the Erudus System has been supplied by the manufacturers of the products and, whilst the owners of the Erudus System take steps to ensure the information is regularly updated, they give no warranty and no guarantee that the information is accurate. Product information and ingredients may change, please always read product labels carefully in addition to using the information provide by Erudus One.

We do not accept liability for any inaccuracies or incorrect information contained on this site. Please visit <http://www.erudus.com/terms-and-conditions> for full terms and conditions

Reference Intake



Nutritional Summary

Energy	1147.08kJ 271.81kCal
Protein	6.5g
Carbohydrates	45.82g
of which sugars	14.78g
Non Milk Extrinsic Sugars	0g
Fat	6.44g
of which saturates	3.81g
Fibre	2.43g
Salt	0.86g
Sodium	0.29g
Iron	0mg
Calcium	0mg
Zinc	0mg
Folate	0µg
Vitamin A	0µg
Vitamin C	0mg

360 - PANINI - TOMATO MOZZ PESTO

Ingredients

Product	Quantity
CSBC 10418 - 60 Panini 110g	110.00 g
CSBC 10055 Green Pesto 6 x 1.12kg	35.00 g
Grated Mozzarella/Cheddar 70/30	56.00 g
Fresh Tomato	20.00 g

Serves: 1

Allergy Information

Key: Contains May Contain

Contains Cereal	Contains Milk	May Contain Eggs	Does Not Contain Peanuts	Does Not Contain Nuts	Does Not Contain Crustaceans	Does Not Contain Mustard
Does Not Contain Fish	Does Not Contain Lupin	May Contain Sesame	Does Not Contain Celery	Does Not Contain Soya	Does Not Contain Molluscs	Contains SO2

Nuts:		Cereals:	
Almond Nuts:	No	Wheat:	Yes
Hazelnuts:	No	Rye:	No
Walnuts:	No	Spelt:	No
Cashew Nuts:	No	Oats:	No
Pecan Nuts:	No	Barley:	No
Brazil Nuts:	No	Kamut:	No
Pistachio Nuts:	No		

Dietary Information

Key: Suitable for

Suitable for Vegetarian	May not be suitable for Vegan	May not be suitable for Kosher	May not be suitable for Halal
-------------------------	-------------------------------	--------------------------------	-------------------------------

Label Information

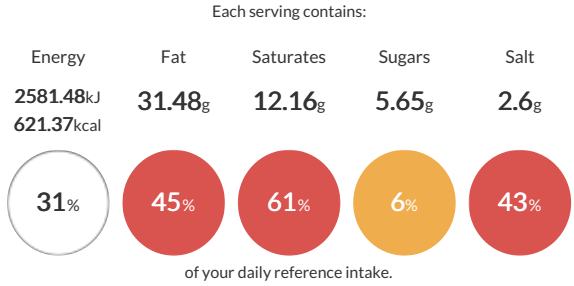
Ingredients
 CSBC 10418 - 60 Panini 110g (50%) (**WHEAT** Flour, Water, Yeast, Salt, Olive Oil, **WHEAT** Gluten, Malted **WHEAT** Flour, Flour Treatment Agent (Ascorbic Acid)). Grated **Mozzarella/Cheddar** 70/30 (25%) (**mozzarella (MILK)** 70%, **cheddar (MILK)** 30%, anti-caking agent (Potato Starch)). CSBC 10055 Green Pesto 6 x 1.12kg (16%) (Chopped Basil (41%), Rapeseed Oil, Olive Oil, Medium Fat Hard **Cheese (MILK)**, Water, Sugar, Salt, Garlic Purée, Acidity Regulator (Lactic Acid), Potato Powder (**SULPHITES**), Black Pepper.). Fresh Tomato (9%) (Fresh Tomato Sliced).

Method & Recipe Notes

The information on the Erudus System has been supplied by the manufacturers of the products and, whilst the owners of the Erudus System take steps to ensure the information is regularly updated, they give no warranty and no guarantee that the information is accurate. Product information and ingredients may change, please always read product labels carefully in addition to using the information provide by Erudus One.

We do not accept liability for any inaccuracies or incorrect information contained on this site. Please visit <http://www.erudus.com/terms-and-conditions> for full terms and conditions

Reference Intake



Nutritional Summary

Energy	2581.48kJ 621.37kCal
Protein	24.04g
Carbohydrates	59.55g
of which sugars	5.65g
Non Milk Extrinsic Sugars	0g
Fat	31.48g
of which saturates	12.16g
Fibre	4.25g
Salt	2.6g
Sodium	0g
Iron	0mg
Calcium	0mg
Zinc	0mg
Folate	0µg
Vitamin A	0µg
Vitamin C	0mg

360 - PANINI BBQ CHICKEN CHEESE

Ingredients

Product	Quantity
CSBC 10418 - 60 Panini 110g	110.00 g
CSBC 10272 Frozen Chicken Breast Strips 12mm (4 x 2.5kg)	90.00 g
CSBC 10082 Sticky BBQ Sauce 2.27L	60.00 g
Grated Mozzarella/Cheddar 70/30	56.00 g

Serves: 1

Allergy Information

Key: Contains May Contain

Contains Cereal	Contains Milk	May Contain Eggs	Does Not Contain Peanuts	Does Not Contain Nuts	Does Not Contain Crustaceans	Does Not Contain Mustard
Does Not Contain Fish	Does Not Contain Lupin	May Contain Sesame	Does Not Contain Celery	Does Not Contain Soya	Does Not Contain Molluscs	Contains SO2

Nuts:		Cereals:	
Almond Nuts:	No	Wheat:	Yes
Hazelnuts:	No	Rye:	No
Walnuts:	No	Spelt:	No
Cashew Nuts:	No	Oats:	No
Pecan Nuts:	No	Barley:	No
Brazil Nuts:	No	Kamut:	No
Pistachio Nuts:	No		

Dietary Information

Key: Suitable for

May not be suitable for Vegetarian	May not be suitable for Vegan	May not be suitable for Kosher	May not be suitable for Halal
------------------------------------	-------------------------------	--------------------------------	-------------------------------

Label Information

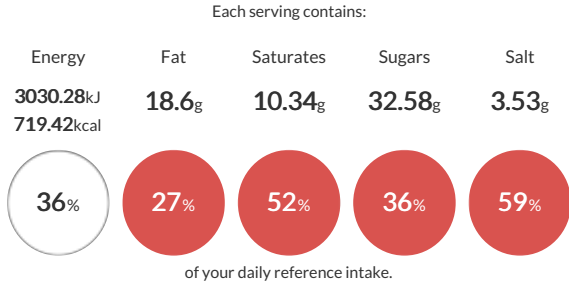
Ingredients
 CSBC 10418 - 60 Panini 110g (35%) (**WHEAT** Flour, Water, Yeast, Salt, Olive Oil, **WHEAT** Gluten, Malted **WHEAT** Flour, Flour Treatment Agent (Ascorbic Acid)). CSBC 10272 Frozen Chicken Breast Strips 12mm (4 x 2.5kg) (28%) (Chicken, Salt Made with 114g of raw chicken per 100g of finished product). CSBC 10082 Sticky BBQ Sauce 2.27L (19%) (Water, Sugar, Tomato Paste, Spirit Vinegar, Glucose-Fructose Syrup, Modified Maize Starch, Bramley Apple Puree (Bramley Apple Puree, Preservative (Sodium **METABISULPHITE**)), Salt, Apple Juice Concentrate, Acidity Regulator (Acetic Acid), Colour (Ammonia Caramel), Flavourings (Smoke Flavourings, Flavouring), Preservative (Potassium Sorbate), Stabiliser (Xanthan Gum), Paprika, Dried Garlic, Dried Onion, Black Pepper, Cayenne Pepper.). Grated **Mozzarella/Cheddar** 70/30 (18%) (**mozzarella (MILK)** 70%, **cheddar (MILK)** 30%, anti-caking agent (Potato Starch)).

Method & Recipe Notes

The information on the Erudus System has been supplied by the manufacturers of the products and, whilst the owners of the Erudus System take steps to ensure the information is regularly updated, they give no warranty and no guarantee that the information is accurate. Product information and ingredients may change, please always read product labels carefully in addition to using the information provide by Erudus One.

We do not accept liability for any inaccuracies or incorrect information contained on this site. Please visit <http://www.erudus.com/terms-and-conditions> for full terms and conditions

Reference Intake



Nutritional Summary

Energy	3030.28kJ 719.42kCal
Protein	50.47g
Carbohydrates	86.1g
of which sugars	32.58g
Non Milk Extrinsic Sugars	0g
Fat	18.6g
of which saturates	10.34g
Fibre	4.79g
Salt	3.53g
Sodium	0.24g
Iron	0mg
Calcium	0mg
Zinc	0mg
Folate	0µg
Vitamin A	0µg
Vitamin C	0mg

360 - PANINI CHEESE & TOMATO

Ingredients

Product	Quantity
CSBC 10418 - 60 Panini 110g	110.00 g
Grated Mozzarella/Cheddar 70/30	56.00 g
Fresh Tomato	20.00 g

Serves: 1

Allergy Information

Key: Contains May Contain

Contains Cereal	Contains Milk	May Contain Eggs	Does Not Contain Peanuts	Does Not Contain Nuts	Does Not Contain Crustaceans	Does Not Contain Mustard
Does Not Contain Fish	Does Not Contain Lupin	May Contain Sesame	Does Not Contain Celery	Does Not Contain Soya	Does Not Contain Molluscs	Does Not Contain SO2

Nuts:		Cereals:	
Almond Nuts:	No	Wheat:	Yes
Hazelnuts:	No	Rye:	No
Walnuts:	No	Spelt:	No
Cashew Nuts:	No	Oats:	No
Pecan Nuts:	No	Barley:	No
Brazil Nuts:	No	Kamut:	No
Pistachio Nuts:	No		

Dietary Information

Key: Suitable for

Suitable for Vegetarian	May not be suitable for Vegan	May not be suitable for Kosher	May not be suitable for Halal
-------------------------	-------------------------------	--------------------------------	-------------------------------

Label Information

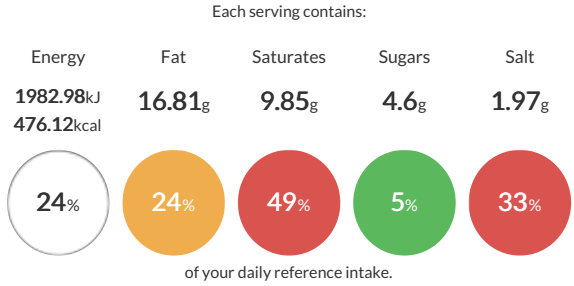
Ingredients
 CSBC 10418 - 60 Panini 110g (59%) (WHEAT Flour, Water, Yeast, Salt, Olive Oil, WHEAT Gluten, Malted WHEAT Flour, Flour Treatment Agent (Ascorbic Acid)). Grated Mozzarella/Cheddar 70/30 (30%) (mozzarella (MILK) 70%, cheddar (MILK) 30%, anti-caking agent (Potato Starch)). Fresh Tomato (11%) (Fresh Sliced Tomato).

Method & Recipe Notes

The information on the Erudus System has been supplied by the manufacturers of the products and, whilst the owners of the Erudus System take steps to ensure the information is regularly updated, they give no warranty and no guarantee that the information is accurate. Product information and ingredients may change, please always read product labels carefully in addition to using the information provided by Erudus One.

We do not accept liability for any inaccuracies or incorrect information contained on this site. Please visit <http://www.erudus.com/terms-and-conditions> for full terms and conditions

Reference Intake



Nutritional Summary

Energy	1982.98kJ 476.12kCal
Protein	22.92g
Carbohydrates	57.66g
of which sugars	4.6g
Non Milk Extrinsic Sugars	0g
Fat	16.81g
of which saturates	9.85g
Fibre	3.65g
Salt	1.97g
Sodium	0g
Iron	0mg
Calcium	0mg
Zinc	0mg
Folate	0µg
Vitamin A	0µg
Vitamin C	0mg

360 - PANINI CHEESE AND HAM

Ingredients

Product	Quantity
CSBC 10418 - 60 Panini 110g	110.00 g
Sliced Premium Honey Roast Ham (500g)	50.00 g
Grated Mozzarella/Cheddar 70/30	56.00 g

Serves: 1

Allergy Information

Key: Contains May Contain

Contains Cereal	Contains Milk	May Contain Eggs	Does Not Contain Peanuts	Does Not Contain Nuts	Does Not Contain Crustaceans	Does Not Contain Mustard
Does Not Contain Fish	Does Not Contain Lupin	May Contain Sesame	Does Not Contain Celery	Does Not Contain Soya	Does Not Contain Molluscs	Does Not Contain SO2

Nuts:		Cereals:	
Almond Nuts:	No	Wheat:	Yes
Hazelnuts:	No	Rye:	No
Walnuts:	No	Spelt:	No
Cashew Nuts:	No	Oats:	No
Pecan Nuts:	No	Barley:	No
Brazil Nuts:	No	Kamut:	No
Pistachio Nuts:	No		

Dietary Information

Key: Suitable for

May not be suitable for Vegetarian	May not be suitable for Vegan	May not be suitable for Kosher	May not be suitable for Halal
------------------------------------	-------------------------------	--------------------------------	-------------------------------

Label Information

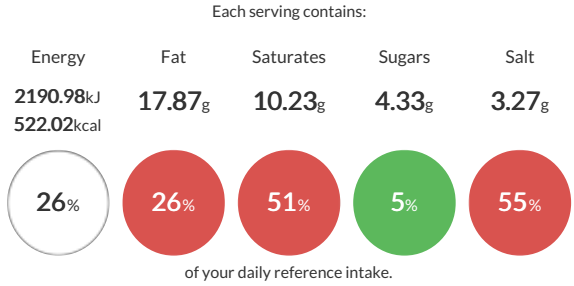
Ingredients
 CSBC 10418 - 60 Panini 110g (51%) (**WHEAT** Flour, Water, Yeast, Salt, Olive Oil, **WHEAT** Gluten, Malted **WHEAT** Flour, Flour Treatment Agent (Ascorbic Acid)). Grated **Mozzarella/Cheddar** 70/30 (26%) (**mozzarella (MILK)** 70%, **cheddar (MILK)** 30%, anti-caking agent (Potato Starch)). Sliced Premium Honey Roast Ham (500g) (23%) (EU Pork (85%), Water, Salt, Dried Glucose Syrup, Stabilisers (E451, E450, E452), Honey (0.2%), Demerara sugar, Antioxidant (E301), Preservative (E250)).

Method & Recipe Notes

The information on the Erudus System has been supplied by the manufacturers of the products and, whilst the owners of the Erudus System take steps to ensure the information is regularly updated, they give no warranty and no guarantee that the information is accurate. Product information and ingredients may change, please always read product labels carefully in addition to using the information provide by Erudus One.

We do not accept liability for any inaccuracies or incorrect information contained on this site. Please visit <http://www.erudus.com/terms-and-conditions> for full terms and conditions

Reference Intake



Nutritional Summary

Energy	2190.98kJ 522.02kCal
Protein	32.3g
Carbohydrates	57.13g
of which sugars	4.33g
Non Milk Extrinsic Sugars	0g
Fat	17.87g
of which saturates	10.23g
Fibre	3.66g
Salt	3.27g
Sodium	0g
Iron	0mg
Calcium	0mg
Zinc	0mg
Folate	0µg
Vitamin A	0µg
Vitamin C	0mg

360 - PANINI TUNA MAYO MOZZ

Ingredients

Product	Quantity
CSBC 10418 - 60 Panini 110g	110.00 g
CSBC 11116 Skipjack Tuna Chunks in Brine	70.00 g
CSBC 10057 Real Mayonnaise 5l	35.00 g
Grated Mozzarella/Cheddar 70/30	56.00 g

Serves: 1

Allergy Information

Key: Contains May Contain

Contains Cereal	Contains Milk	Contains Eggs	Does Not Contain Peanuts	Does Not Contain Nuts	Does Not Contain Crustaceans	Does Not Contain Mustard
Contains Fish	Does Not Contain Lupin	May Contain Sesame	Does Not Contain Celery	Does Not Contain Soya	Does Not Contain Molluscs	Does Not Contain SO2

Nuts:		Cereals:	
Almond Nuts:	No	Wheat:	Yes
Hazelnuts:	No	Rye:	No
Walnuts:	No	Spelt:	No
Cashew Nuts:	No	Oats:	No
Pecan Nuts:	No	Barley:	No
Brazil Nuts:	No	Kamut:	No
Pistachio Nuts:	No		

Dietary Information

Key: Suitable for

May not be suitable for Vegetarian	May not be suitable for Vegan	May not be suitable for Kosher	May not be suitable for Halal
------------------------------------	-------------------------------	--------------------------------	-------------------------------

Label Information

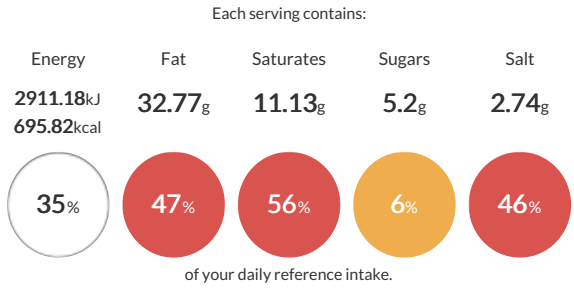
Ingredients
 CSBC 10418 - 60 Panini 110g (41%) (**WHEAT** Flour, Water, Yeast, Salt, Olive Oil, **WHEAT** Gluten, Malted **WHEAT** Flour, Flour Treatment Agent (Ascorbic Acid)). CSBC 11116 Skipjack **Tuna** Chunks in Brine (26%) (Skipjack **Tuna** (katsuwonus pelamis) (**FISH**), Water, Salt). Grated **Mozzarella/Cheddar** 70/30 (21%) (**mozzarella** (**MILK**) 70%, **cheddar** (**MILK**) 30%, anti-caking agent (Potato Starch)). CSBC 10057 Real Mayonnaise 5l (13%) (Rapeseed Oil, Water, Spirit Vinegar, Stabilisers (Modified Potato Starch, Xanthan Gum), Sugar, Salt, Pasteurised **EGG**, Preservative (Potassium Sorbate)).

Method & Recipe Notes

The information on the Erudus System has been supplied by the manufacturers of the products and, whilst the owners of the Erudus System take steps to ensure the information is regularly updated, they give no warranty and no guarantee that the information is accurate. Product information and ingredients may change, please always read product labels carefully in addition to using the information provide by Erudus One.

We do not accept liability for any inaccuracies or incorrect information contained on this site. Please visit <http://www.erudus.com/terms-and-conditions> for full terms and conditions

Reference Intake



Nutritional Summary

Energy	2911.18kJ 695.82kCal
Protein	40.39g
Carbohydrates	59.05g
of which sugars	5.2g
Non Milk Extrinsic Sugars	0g
Fat	32.77g
of which saturates	11.13g
Fibre	3.52g
Salt	2.74g
Sodium	0.11g
Iron	0mg
Calcium	0mg
Zinc	0mg
Folate	0µg
Vitamin A	0µg
Vitamin C	0mg

360 - LB JACKET CHEESE BEANS

Ingredients

Product	Quantity
3 x 10* Extra Large Ready Baked Jacket Potatoes (2.8kg e)	500.00 g
CSBC 10031 Baked Beans in Tomato Sauce 2620g	160.00 g
Grated Mozzarella/Cheddar 70/30	70.00 g

Serves: 1

Allergy Information

Key: Contains May Contain

Does Not Contain Cereal	Contains Milk	Does Not Contain Eggs	Does Not Contain Peanuts	Does Not Contain Nuts	Does Not Contain Crustaceans	Does Not Contain Mustard
Does Not Contain Fish	Does Not Contain Lupin	Does Not Contain Sesame	Does Not Contain Celery	Does Not Contain Soya	Does Not Contain Molluscs	Does Not Contain SO2

Nuts:		Cereals:	
Almond Nuts:	No	Wheat:	No
Hazelnuts:	No	Rye:	No
Walnuts:	No	Spelt:	No
Cashew Nuts:	No	Oats:	No
Pecan Nuts:	No	Barley:	No
Brazil Nuts:	No	Kamut:	No
Pistachio Nuts:	No	Gluten Content: Gluten < 20ppm	

Dietary Information

Key: Suitable for

Suitable for Vegetarian	May not be suitable for Vegan	May not be suitable for Kosher	May not be suitable for Halal
-------------------------	-------------------------------	--------------------------------	-------------------------------

Label Information

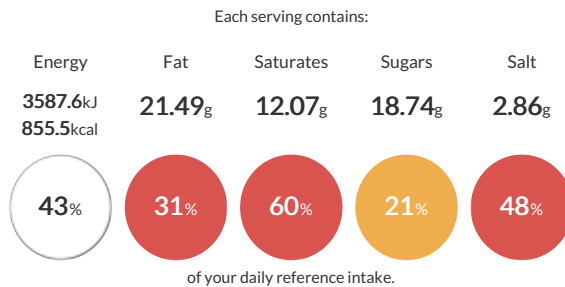
Ingredients
3 x 10* Extra Large Ready Baked Jacket Potatoes (2.8kg e) (68%) (British Potato (100%) MANUFACTURED IN AN ENVIRONMENT HANDLING DAIRY INGREDIENTS). CSBC 10031 Baked Beans in Tomato Sauce 2620g (22%) (Haricot Beans (49%), Tomatoes (27%), Water, Sugar, Modified Maize Starch, Salt, Glucose-Fructose Syrup, Onion Powder, Paprika, Flavours.). Grated **Mozzarella/Cheddar** 70/30 (10%) (**mozzarella (MILK)** 70%, **cheddar (MILK)** 30%, anti-caking agent (Potato Starch)).

Method & Recipe Notes

The information on the Erudus System has been supplied by the manufacturers of the products and, whilst the owners of the Erudus System take steps to ensure the information is regularly updated, they give no warranty and no guarantee that the information is accurate. Product information and ingredients may change, please always read product labels carefully in addition to using the information provide by Erudus One.

We do not accept liability for any inaccuracies or incorrect information contained on this site. Please visit <http://www.erudus.com/terms-and-conditions> for full terms and conditions

Reference Intake



Nutritional Summary

Energy	3587.6kJ 855.5kCal
Protein	36.23g
Carbohydrates	117.6g
of which sugars	18.74g
Non Milk Extrinsic Sugars	0g
Fat	21.49g
of which saturates	12.07g
Fibre	22.92g
Salt	2.86g
Sodium	0.94g
Iron	0mg
Calcium	0mg
Zinc	0mg
Folate	0µg
Vitamin A	0µg
Vitamin C	0mg

360 - LB JACKET POTATO TUNA MAYO

Ingredients

Product	Quantity
3 x 10* Extra Large Ready Baked Jacket Potatoes (2.8kg e)	500.00 g
CSBC 11116 Skipjack Tuna Chunks in Brine	95.00 g
CSBC 10057 Real Mayonnaise 5l	35.00 g

Serves: 1

Allergy Information

Key: Contains May Contain

Does Not Contain Cereal	Does Not Contain Milk	Contains Eggs	Does Not Contain Peanuts	Does Not Contain Nuts	Does Not Contain Crustaceans	Does Not Contain Mustard
Contains Fish	Does Not Contain Lupin	Does Not Contain Sesame	Does Not Contain Celery	Does Not Contain Soya	Does Not Contain Molluscs	Does Not Contain SO2

Nuts:		Cereals:	
Almond Nuts:	No	Wheat:	No
Hazelnuts:	No	Rye:	No
Walnuts:	No	Spelt:	No
Cashew Nuts:	No	Oats:	No
Pecan Nuts:	No	Barley:	No
Brazil Nuts:	No	Kamut:	No
Pistachio Nuts:	No		

Dietary Information

Key: Suitable for

May not be suitable for Vegetarian	May not be suitable for Vegan	May not be suitable for Kosher	May not be suitable for Halal
------------------------------------	-------------------------------	--------------------------------	-------------------------------

Label Information

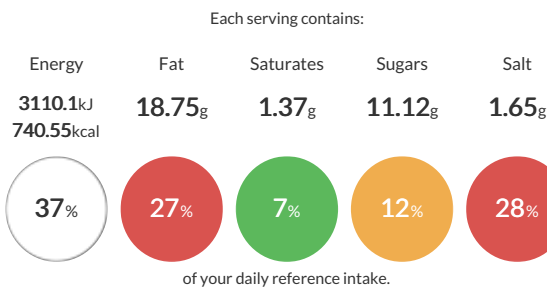
Ingredients
 3 x 10* Extra Large Ready Baked Jacket Potatoes (2.8kg e) (79%) (British Potato (100%) MANUFACTURED IN AN ENVIRONMENT HANDLING DAIRY INGREDIENTS). CSBC 11116 Skipjack **Tuna** Chunks in Brine (15%) (Skipjack **Tuna** (katsuwonus pelamis) (**FISH**), Water, Salt). CSBC 10057 Real Mayonnaise 5l (6%) (Rapeseed Oil, Water, Spirit Vinegar, Stabilisers (Modified Potato Starch, Xanthan Gum), Sugar, Salt, Pasteurised **EGG**, Preservative (Potassium Sorbate)).

Method & Recipe Notes

The information on the Erudus System has been supplied by the manufacturers of the products and, whilst the owners of the Erudus System take steps to ensure the information is regularly updated, they give no warranty and no guarantee that the information is accurate. Product information and ingredients may change, please always read product labels carefully in addition to using the information provide by Erudus One.

We do not accept liability for any inaccuracies or incorrect information contained on this site. Please visit <http://www.erudus.com/terms-and-conditions> for full terms and conditions

Reference Intake



Nutritional Summary

Energy	3110.1kJ 740.55kCal
Protein	34.39g
Carbohydrates	99.67g
of which sugars	11.12g
Non Milk Extrinsic Sugars	0g
Fat	18.75g
of which saturates	1.37g
Fibre	17.11g
Salt	1.65g
Sodium	0.67g
Iron	0mg
Calcium	0mg
Zinc	0mg
Folate	0µg
Vitamin A	0µg
Vitamin C	0mg

Ingredients

Product	Quantity
Dorito's Tortilla Chips	125.00 g
Et Voila Chunky Salsa Sauce 2kg	80.00 g
Grated Mozzarella/Cheddar 70/30	120.00 g
Set Soured Cream	80.00 g
Supreme Guacamole	80.00 g

Serves: 1

Allergy Information

Key: Contains May Contain

May Contain Cereal	Contains Milk	Does Not Contain Eggs	Does Not Contain Peanuts	Does Not Contain Nuts	Does Not Contain Crustaceans	Does Not Contain Mustard
Does Not Contain Fish	Does Not Contain Lupin	Does Not Contain Sesame	Does Not Contain Celery	May Contain Soya	Does Not Contain Molluscs	Does Not Contain SO2

Nuts:

Almond Nuts:	No
Hazelnuts:	No
Walnuts:	No
Cashew Nuts:	No
Pecan Nuts:	No
Brazil Nuts:	No
Pistachio Nuts:	No

Cereals:

Wheat:	May
Rye:	No
Spelt:	No
Oats:	No
Barley:	May
Kamut:	No

Dietary Information

Key: Suitable for

May not be suitable for Vegetarian	May not be suitable for Vegan	May not be suitable for Kosher	May not be suitable for Halal
------------------------------------	-------------------------------	--------------------------------	-------------------------------

Label Information

Ingredients

Dorito's Tortilla Chips (26%) (Corn (Maize) Vegetable Oils (Corn, Sunflower, Rapeseed, in varying proportions) Salt). Grated **Mozzarella/Cheddar** 70/30 (25%) (**mozzarella (MILK)** 70%, **cheddar (MILK)** 30%, anti-caking agent (Potato Starch)). Et Voila Chunky Salsa Sauce 2kg (16%) (Tomatoes (47%), Onion (18%), Red Pepper, Tomato Paste, Green Pepper, Sugar, White Wine Vinegar, Lemon Juice, Salt, Corn Flour, Garlic Puree, Lactic Acid, Jalapeno Peppers, Coriander Leaves.). Set Soured **Cream** (16%) (**MILK, CREAM (MILK)**, Stabiliser (Maize and Potato Starch), Lactic Cultures, Preservative (Potassium Sorbate).). Supreme Guacamole (16%) (Avocado (82%), Water, Red Bell Pepper, Jalapeno Puree, Salt, Sugar, Antioxidant (Ascorbic Acid), Onion Powder, Stabiliser (Xanthan Gum), Garlic Powder, Acidity Regulator (Citric Acid), Dehydrated Coriander.).

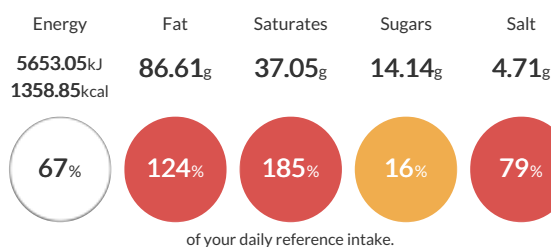
Method & Recipe Notes

The information on the Erudus System has been supplied by the manufacturers of the products and, whilst the owners of the Erudus System take steps to ensure the information is regularly updated, they give no warranty and no guarantee that the information is accurate. Product information and ingredients may change, please always read product labels carefully in addition to using the information provide by Erudus One.

We do not accept liability for any inaccuracies or incorrect information contained on this site. Please visit <http://www.erudus.com/terms-and-conditions> for full terms and conditions

Reference Intake

Each serving contains:



Nutritional Summary

Energy	5653.05kJ 1358.85kCal
Protein	42.43g
Carbohydrates	93.7g
of which sugars	14.14g
Non Milk Extrinsic Sugars	0g
Fat	86.61g
of which saturates	37.05g
Fibre	14.2g
Salt	4.71g
Sodium	0.31g
Iron	0mg
Calcium	0mg
Zinc	0mg
Folate	0µg
Vitamin A	0µg
Vitamin C	0mg

360 - LB MIXED SALAD 2

Ingredients

Product	Quantity
Europa Salad Mix	30.00 g
Cucumber	35.00 g
Cherry Tomato	25.00 g

Serves: 1

Allergy Information

Key: Contains May Contain

Does Not Contain Cereal	Does Not Contain Milk	Does Not Contain Eggs	Does Not Contain Peanuts	Does Not Contain Nuts	Does Not Contain Crustaceans	Does Not Contain Mustard
Does Not Contain Fish	Does Not Contain Lupin	Does Not Contain Sesame	Does Not Contain Celery	Does Not Contain Soya	Does Not Contain Molluscs	Does Not Contain SO2

Nuts:		Cereals:	
Almond Nuts:	No	Wheat:	No
Hazelnuts:	No	Rye:	No
Walnuts:	No	Spelt:	No
Cashew Nuts:	No	Oats:	No
Pecan Nuts:	No	Barley:	No
Brazil Nuts:	No	Kamut:	No
Pistachio Nuts:	No		

Dietary Information

Key: Suitable for

Suitable for Vegetarian	Suitable for Vegan	May not be suitable for Kosher	May not be suitable for Halal
-------------------------	--------------------	--------------------------------	-------------------------------

Label Information

Ingredients

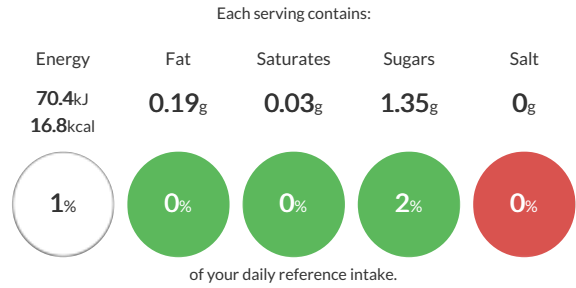
Cucumber (39%) (Cucumber). Europa Salad Mix (33%) (Lollo Rosso, Endive, Apollo, Red Chard). Cherry Tomato (28%) (Cherry Tomato).

Method & Recipe Notes

The information on the Erudus System has been supplied by the manufacturers of the products and, whilst the owners of the Erudus System take steps to ensure the information is regularly updated, they give no warranty and no guarantee that the information is accurate. Product information and ingredients may change, please always read product labels carefully in addition to using the information provide by Erudus One.

We do not accept liability for any inaccuracies or incorrect information contained on this site. Please visit <http://www.erudus.com/terms-and-conditions> for full terms and conditions

Reference Intake



Nutritional Summary

Energy	70.4kJ 16.8kCal
Protein	0.95g
Carbohydrates	1.86g
of which sugars	1.35g
Non Milk Extrinsic Sugars	0g
Fat	0.19g
of which saturates	0.03g
Fibre	1.05g
Salt	0g
Sodium	0g
Iron	0mg
Calcium	0mg
Zinc	0mg
Folate	0µg
Vitamin A	0µg
Vitamin C	0mg