



Recipe Ingredients and Nutrition

Contents - Lighter Bites

1. **Contents**
2. **Jacket with Cheese & Coleslaw**
3. **Jacket with Cheese & Beans**
4. **Jacket with Coronation Chicken**
5. **Jacket with Cheese**
6. **Jacket with Tuna & Mayo**
7. **Panini with Onion, Rocket & Brie**
8. **Panini with Sundried Tomato, Mozzarella & Pesto**
9. **Panini with BBQ Chicken & Cheese**
10. **Panini with Cheese & Ham**
11. **Panini with Tuna & Mayo**

360 - JACKET CHEESE AND COLESLAW MAIN

Ingredients

Product	Quantity
3 x 10* Extra Large Ready Baked Jacket Potatoes (2.8kg e)	500.00 g
CSBC 10370 Shredded Mozzarella Cheese/Cheddar Cheese 70%/30%	70.00 g
Coleslaw Mix 2.5kg	70.00 g
CSBC 10057 Real Mayonnaise 5l	30.00 g

Serves: 1

Allergy Information

Key: Contains May Contain

Does Not Contain Cereal	Contains Milk	Contains Eggs	Does Not Contain Peanuts	Does Not Contain Nuts	Does Not Contain Crustaceans	Does Not Contain Mustard
Does Not Contain Fish	Does Not Contain Lupin	Does Not Contain Sesame	Does Not Contain Celery	Does Not Contain Soya	Does Not Contain Molluscs	Does Not Contain SO2

Nuts:		Cereals:	
Almond Nuts:	No	Wheat:	No
Hazelnuts:	No	Rye:	No
Walnuts:	No	Spelt:	No
Cashew Nuts:	No	Oats:	No
Pecan Nuts:	No	Barley:	No
Brazil Nuts:	No	Kamut:	No
Pistachio Nuts:	No		

Dietary Information

Key: Suitable for

Suitable for Vegetarian	May not be suitable for Vegan	May not be suitable for Kosher	May not be suitable for Halal

Label Information

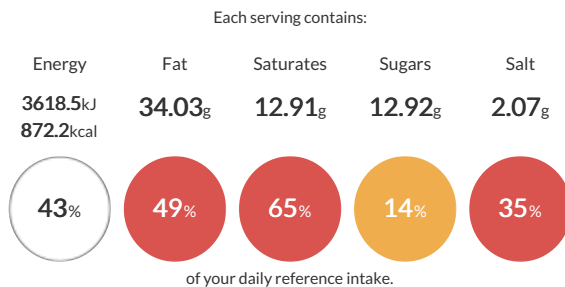
Ingredients
 3 x 10* Extra Large Ready Baked Jacket Potatoes (2.8kg e) (75%) (British Potato (100%) MANUFACTURED IN AN ENVIRONMENT HANDLING DAIRY INGREDIENTS). CSBC 10370 Shredded Mozzarella Cheese/**Cheddar Cheese 70%/30%** (10%) (**Mozzarella Cheese** (70%) (**MILK**), **Cheddar Cheese** (30%) (**MILK**), Anti-Caking Agent (Potato Starch)). Coleslaw Mix 2.5kg (10%) (Cabbage, carrot). CSBC 10057 Real Mayonnaise 5l (4%) (Rapeseed oil, Water, Spirit Vinegar, Stabilisers (Modified Potato Starch, Xanthan Gum), Sugar, Salt, Pasteurised EGG, Preservative (Potassium sorbate)).

Method & Recipe Notes

The information on the Erudus System has been supplied by the manufacturers of the products and, whilst the owners of the Erudus System take steps to ensure the information is regularly updated, they give no warranty and no guarantee that the information is accurate. Product information and ingredients may change, please always read product labels carefully in addition to using the information provide by Erudus One.

We do not accept liability for any inaccuracies or incorrect information contained on this site. Please visit <http://www.erudus.com/terms-and-conditions> for full terms and conditions

Reference Intake



Nutritional Summary

Energy	3618.5kJ 872.2kCal
Protein	29.1g
Carbohydrates	102.58g
of which sugars	12.92g
Non Milk Extrinsic Sugars	0g
Fat	34.03g
of which saturates	12.91g
Fibre	19.19g
Salt	2.07g
Sodium	0.41g
Iron	0mg
Calcium	0mg
Zinc	0mg
Folate	0µg
Vitamin A	0µg
Vitamin C	0mg

360 - JACKET CHEESE BEANS MAIN

Ingredients

Product	Quantity
3 x 10* Extra Large Ready Baked Jacket Potatoes (2.8kg e)	500.00 g
CSBC 10031 Baked Beans in Tomato Sauce 2620g	160.00 g
CSBC 10370 Shredded Mozzarella Cheese/Cheddar Cheese 70%/30%	70.00 g

Serves: 1

Allergy Information

Key: Contains May Contain

Does Not Contain Cereal	Contains Milk	Does Not Contain Eggs	Does Not Contain Peanuts	Does Not Contain Nuts	Does Not Contain Crustaceans	Does Not Contain Mustard
Does Not Contain Fish	Does Not Contain Lupin	Does Not Contain Sesame	Does Not Contain Celery	Does Not Contain Soya	Does Not Contain Molluscs	Does Not Contain SO2

Nuts:		Cereals:	
Almond Nuts:	No	Wheat:	No
Hazelnuts:	No	Rye:	No
Walnuts:	No	Spelt:	No
Cashew Nuts:	No	Oats:	No
Pecan Nuts:	No	Barley:	No
Brazil Nuts:	No	Kamut:	No
Pistachio Nuts:	No	Gluten Content: Gluten < 20ppm	

Dietary Information

Key: Suitable for

Suitable for Vegetarian	May not be suitable for Vegan	May not be suitable for Kosher	May not be suitable for Halal
-------------------------	-------------------------------	--------------------------------	-------------------------------

Label Information

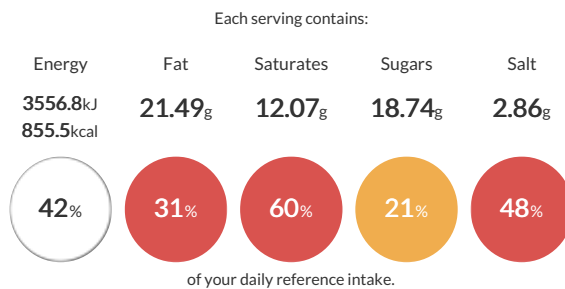
Ingredients
3 x 10* Extra Large Ready Baked Jacket Potatoes (2.8kg e) (68%) (British Potato (100%) MANUFACTURED IN AN ENVIRONMENT HANDLING DAIRY INGREDIENTS). CSBC 10031 Baked Beans in Tomato Sauce 2620g (22%) (Haricot Beans (49%), Tomatoes (27%), Water, Sugar, Modified Maize Starch, Salt, Glucose-Fructose Syrup, Onion Powder, Paprika, Flavours.). CSBC 10370 Shredded Mozzarella Cheese/Cheddar Cheese 70%/30% (10%) (Mozzarella Cheese (70%) (MILK), Cheddar Cheese (30%) (MILK), Anti-Caking Agent (Potato Starch)).

Method & Recipe Notes

The information on the Erudus System has been supplied by the manufacturers of the products and, whilst the owners of the Erudus System take steps to ensure the information is regularly updated, they give no warranty and no guarantee that the information is accurate. Product information and ingredients may change, please always read product labels carefully in addition to using the information provide by Erudus One.

We do not accept liability for any inaccuracies or incorrect information contained on this site. Please visit <http://www.erudus.com/terms-and-conditions> for full terms and conditions

Reference Intake



Nutritional Summary

Energy	3556.8kJ 855.5kCal
Protein	36.23g
Carbohydrates	117.6g
of which sugars	18.74g
Non Milk Extrinsic Sugars	0g
Fat	21.49g
of which saturates	12.07g
Fibre	22.92g
Salt	2.86g
Sodium	0.94g
Iron	0mg
Calcium	0mg
Zinc	0mg
Folate	0µg
Vitamin A	0µg
Vitamin C	0mg

360 - JACKET CORONATION CHICKEN

Ingredients

Product	Quantity
3 x 10* Extra Large Ready Baked Jacket Potatoes (2.8kg e)	500.00 g
Coronation Chicken	100.00 g

Serves: 1

Allergy Information

Key: Contains May Contain

Nuts:		Cereals:	
Almond Nuts:	No	Wheat:	No
Hazelnuts:	No	Rye:	No
Walnuts:	No	Spelt:	No
Cashew Nuts:	No	Oats:	No
Pecan Nuts:	No	Barley:	No
Brazil Nuts:	No	Kamut:	No
Pistachio Nuts:	No		

Dietary Information

Key: Suitable for

--	--	--	--

Label Information

Ingredients

3 x 10* Extra Large Ready Baked Jacket Potatoes (2.8kg e) (83%) (British Potato (100%) MANUFACTURED IN AN ENVIRONMENT HANDLING DAIRY INGREDIENTS). Coronation Chicken (17%) (Sliced Chicken (45%) (Chicken Breast (98%), Water, Salt), Coronation Mayonnaise (35%) (Rapeseed Oil, Water, Curry Paste (7%) (Rapeseed Oil, Water, Coriander, Salt, Rice Flour, Turmeric, Fenugreek, Black Pepper, Cumin, Acetic Acid, Garlic Powder, Ginger, Mango Powder, Citric Acid, Spice Extracts, Flavourings, Colours (Paprika (E160c), Turmeric (E100)), Emulsifier (E433)), Pasteurised Egg Yolk, Spirit Vinegar, Sugar, Salt, Mustard Flour, Stabilisers (E412, E415)), Thick and Creamy Mayonnaise (Water, Rapeseed Oil, Stabiliser Blend (Thickener (Modified Potato Starch, Pea Starch), Preservative (E202, E211, E262), Spice Extract, Antioxidant (E330)), Liquid Sugar (Sugar, Water), Spirit Vinegar, Salt, Pasteurised Free Range Egg Yolk with Salt (Free Range Liquid Egg Yolk, Salt), Stabiliser (E415), Mustard Flour, Preservative (E260) (E260, Water)), Sultanas (Sultanas, Vegetable Oil (Cottonseed)), Apricots (Dried Apricots, Rice Flour, Preservative (E220) (Sulphites))).

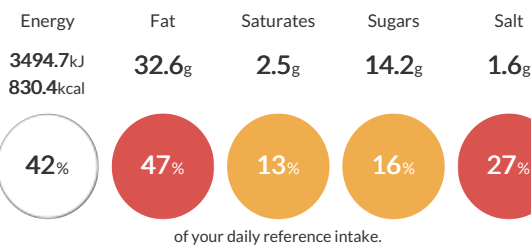
Method & Recipe Notes

The information on the Erudus System has been supplied by the manufacturers of the products and, whilst the owners of the Erudus System take steps to ensure the information is regularly updated, they give no warranty and no guarantee that the information is accurate. Product information and ingredients may change, please always read product labels carefully in addition to using the information provide by Erudus One.

We do not accept liability for any inaccuracies or incorrect information contained on this site. Please visit <http://www.erudus.com/terms-and-conditions> for full terms and conditions

Reference Intake

Each serving contains:



Nutritional Summary

Energy	3494.7kJ 830.4kCal
Protein	22.9g
Carbohydrates	103.2g
of which sugars	14.2g
Non Milk Extrinsic Sugars	0g
Fat	32.6g
of which saturates	2.5g
Fibre	17.7g
Salt	1.6g
Sodium	0.3g
Iron	0mg
Calcium	0mg
Zinc	0mg
Folate	0µg
Vitamin A	0µg
Vitamin C	0mg

360 - JACKET POTATO CHEESE CHILDS

Ingredients

Product	Quantity
3 x 10" Extra Large Ready Baked Jacket Potatoes (2.8kg e)	250.00 g
CSBC 10370 Shredded Mozzarella Cheese/Cheddar Cheese 70%/30%	50.00 g

Serves: 1

Allergy Information

Key: Contains May Contain

Does Not Contain Cereal	Contains Milk	Does Not Contain Eggs	Does Not Contain Peanuts	Does Not Contain Nuts	Does Not Contain Crustaceans	Does Not Contain Mustard
Does Not Contain Fish	Does Not Contain Lupin	Does Not Contain Sesame	Does Not Contain Celery	Does Not Contain Soya	Does Not Contain Molluscs	Does Not Contain SO2

Nuts:		Cereals:	
Almond Nuts:	No	Wheat:	No
Hazelnuts:	No	Rye:	No
Walnuts:	No	Spelt:	No
Cashew Nuts:	No	Oats:	No
Pecan Nuts:	No	Barley:	No
Brazil Nuts:	No	Kamut:	No
Pistachio Nuts:	No	Gluten Content: Gluten < 20ppm	

Dietary Information

Key: Suitable for

Suitable for Vegetarian	May not be suitable for Vegan	May not be suitable for Kosher	May not be suitable for Halal
-------------------------	-------------------------------	--------------------------------	-------------------------------

Label Information

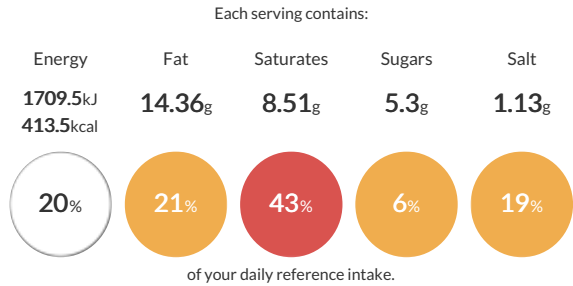
Ingredients
3 x 10" Extra Large Ready Baked Jacket Potatoes (2.8kg e) (83%) (British Potato (100%) MANUFACTURED IN AN ENVIRONMENT HANDLING DAIRY INGREDIENTS). CSBC 10370 Shredded Mozzarella Cheese/Cheddar Cheese 70%/30% (17%) (Mozzarella Cheese (70%) (MILK), Cheddar Cheese (30%) (MILK), Anti-Caking Agent (Potato Starch)).

Method & Recipe Notes

The information on the Erudus System has been supplied by the manufacturers of the products and, whilst the owners of the Erudus System take steps to ensure the information is regularly updated, they give no warranty and no guarantee that the information is accurate. Product information and ingredients may change, please always read product labels carefully in addition to using the information provided by Erudus One.

We do not accept liability for any inaccuracies or incorrect information contained on this site. Please visit <http://www.erudus.com/terms-and-conditions> for full terms and conditions

Reference Intake



Nutritional Summary

Energy	1709.5kJ 413.5kCal
Protein	17.8g
Carbohydrates	49.05g
of which sugars	5.3g
Non Milk Extrinsic Sugars	0g
Fat	14.36g
of which saturates	8.51g
Fibre	8.5g
Salt	1.13g
Sodium	0.11g
Iron	0mg
Calcium	0mg
Zinc	0mg
Folate	0µg
Vitamin A	0µg
Vitamin C	0mg

360 - JACKET POTATO TUNA MAYO MAIN

Ingredients

Product	Quantity
3 x 10" Extra Large Ready Baked Jacket Potatoes (2.8kg e)	500.00 g
CSBC 11116 Skipjack Tuna Chunks in Brine	95.00 g
CSBC 10057 Real Mayonnaise 5l	35.00 g

Serves: 1

Allergy Information

Key: Contains May Contain

Does Not Contain Cereal	Does Not Contain Milk	Contains Eggs	Does Not Contain Peanuts	Does Not Contain Nuts	Does Not Contain Crustaceans	Does Not Contain Mustard
Contains Fish	Does Not Contain Lupin	Does Not Contain Sesame	Does Not Contain Celery	Does Not Contain Soya	Does Not Contain Molluscs	Does Not Contain SO2

Nuts:

Almond Nuts:	No
Hazelnuts:	No
Walnuts:	No
Cashew Nuts:	No
Pecan Nuts:	No
Brazil Nuts:	No
Pistachio Nuts:	No

Cereals:

Wheat:	No
Rye:	No
Spelt:	No
Oats:	No
Barley:	No
Kamut:	No

Dietary Information

Key: Suitable for

May not be suitable for Vegetarian	May not be suitable for Vegan	May not be suitable for Kosher	May not be suitable for Halal
------------------------------------	-------------------------------	--------------------------------	-------------------------------

Label Information

Ingredients

3 x 10" Extra Large Ready Baked Jacket Potatoes (2.8kg e) (79%) (British Potato (100%) MANUFACTURED IN AN ENVIRONMENT HANDLING DAIRY INGREDIENTS). CSBC 11116 Skipjack Tuna Chunks in Brine (15%) (Skipjack Tuna (katsuwonus pelamis)(FISH), Water, Salt). CSBC 10057 Real Mayonnaise 5l (6%) (Rapeseed oil, Water, Spirit Vinegar, Stabilisers (Modified Potato Starch, Xanthan Gum), Sugar, Salt, Pasteurised EGG, Preservative (Potassium sorbate)).

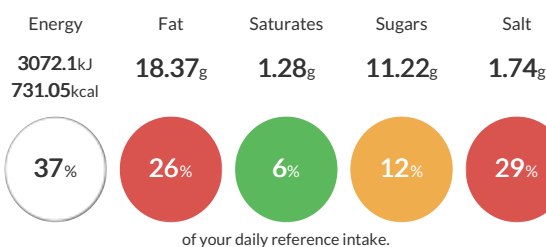
Method & Recipe Notes

The information on the Erudus System has been supplied by the manufacturers of the products and, whilst the owners of the Erudus System take steps to ensure the information is regularly updated, they give no warranty and no guarantee that the information is accurate. Product information and ingredients may change, please always read product labels carefully in addition to using the information provide by Erudus One.

We do not accept liability for any inaccuracies or incorrect information contained on this site. Please visit <http://www.erudus.com/terms-and-conditions> for full terms and conditions

Reference Intake

Each serving contains:



Nutritional Summary

Energy	3072.1kJ 731.05kCal
Protein	32.97g
Carbohydrates	99.77g
of which sugars	11.22g
Non Milk Extrinsic Sugars	0g
Fat	18.37g
of which saturates	1.28g
Fibre	17.2g
Salt	1.74g
Sodium	0.4g
Iron	0.95mg
Calcium	7.6mg
Zinc	0.67mg
Folate	0µg
Vitamin A	0µg
Vitamin C	0mg

360 - PANINI - ONION ROCKET BRIE

Ingredients

Product	Quantity
CSBC 10418 - 60 Panini 110g	110.00 g
Arran Fine Foods Caramelised Onion Chutney 2.35kg	60.00 g
Brie 6 x 1kg Ermitage	60.00 g
Rocket	15.00 g
CSBC 10370 Shredded Mozzarella Cheese/Cheddar Cheese 70%/30%	56.00 g

Serves: 1

Allergy Information

Key: Contains May Contain

Contains Cereal	Contains Milk	May Contain Eggs	Does Not Contain Peanuts	Does Not Contain Nuts	Does Not Contain Crustaceans	Does Not Contain Mustard
Does Not Contain Fish	Does Not Contain Lupin	May Contain Sesame	Does Not Contain Celery	Does Not Contain Soya	Does Not Contain Molluscs	Does Not Contain SO2

Nuts:		Cereals:	
Almond Nuts:	No	Wheat:	Yes
Hazelnuts:	No	Rye:	May
Walnuts:	No	Spelt:	No
Cashew Nuts:	No	Oats:	May
Pecan Nuts:	No	Barley:	May
Brazil Nuts:	No	Kamut:	No
Pistachio Nuts:	No		

Dietary Information

Key: Suitable for

May not be suitable for Vegetarian	May not be suitable for Vegan	May not be suitable for Kosher	May not be suitable for Halal
------------------------------------	-------------------------------	--------------------------------	-------------------------------

Label Information

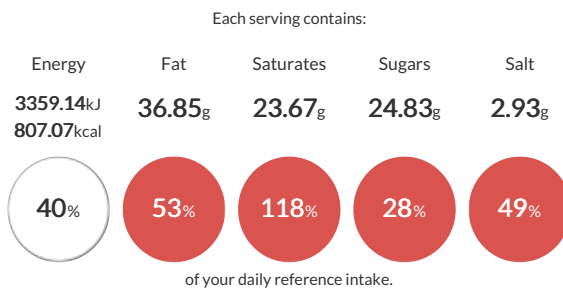
Ingredients
 CSBC 10418 - 60 Panini 110g (37%) (**WHEAT Flour**, Water, Yeast, Salt, Olive Oil, **WHEAT Gluten**, Malted WHEAT Flour, Flour Treatment Agent (Ascorbic Acid)). Arran Fine Foods Caramelised Onion Chutney 2.35kg (20%) (Re-hydrated Onions (86%), Sugar, Spirit Vinegar, Colouring (Plain Caramel) (2%), Thickening Agent (Modified Maize Starch), Sea Salt, Ginger, Preservative (Potassium Sorbate), Cinnamon, Nutmeg.). **Brie** 6 x 1kg Ermitage (20%) (**Pasteurised cows MILK**, Salt, Starter Cultures, Vegetarian Rennet). CSBC 10370 Shredded Mozzarella Cheese/**Cheddar Cheese** 70%/30% (19%) (**Mozzarella Cheese** (70%) (**MILK**), **Cheddar Cheese** (30%) (**MILK**), Anti-Caking Agent (Potato Starch)). Rocket (5%) (Rocket).

Method & Recipe Notes

The information on the Erudus System has been supplied by the manufacturers of the products and, whilst the owners of the Erudus System take steps to ensure the information is regularly updated, they give no warranty and no guarantee that the information is accurate. Product information and ingredients may change, please always read product labels carefully in addition to using the information provide by Erudus One.

We do not accept liability for any inaccuracies or incorrect information contained on this site. Please visit <http://www.erudus.com/terms-and-conditions> for full terms and conditions

Reference Intake



Nutritional Summary

Energy	3359.14kJ 807.07kCal
Protein	34.56g
Carbohydrates	84.48g
of which sugars	24.83g
Non Milk Extrinsic Sugars	0g
Fat	36.85g
of which saturates	23.67g
Fibre	5.02g
Salt	2.93g
Sodium	0.37g
Iron	0.18mg
Calcium	24.1mg
Zinc	0.18mg
Folate	14.21µg
Vitamin A	0.09µg
Vitamin C	6.41mg

360 - PANINI - SUN DRIED TOMATO MOZZ PESTO

Ingredients

Product	Quantity
CSBC 10418 - 60 Panini 110g	110.00 g
CSBC 10561 Sun Dried Tomatoes in Seasoned Sunflower Oil 6x1kg	50.00 g
CSBC 10370 Shredded Mozzarella Cheese/Cheddar Cheese 70%/30%	56.00 g
CSBC 10055 Green Pesto 6 x 1.12kg	35.00 g

Serves: 1

Allergy Information

Key: Contains May Contain

Contains Cereal	Contains Milk	May Contain Eggs	Does Not Contain Peanuts	Does Not Contain Nuts	Does Not Contain Crustaceans	Does Not Contain Mustard
Does Not Contain Fish	Does Not Contain Lupin	May Contain Sesame	Does Not Contain Celery	Does Not Contain Soya	Does Not Contain Molluscs	Contains SO2

Nuts:		Cereals:	
Almond Nuts:	No	Wheat:	Yes
Hazelnuts:	No	Rye:	May
Walnuts:	No	Spelt:	No
Cashew Nuts:	No	Oats:	May
Pecan Nuts:	No	Barley:	May
Brazil Nuts:	No	Kamut:	No
Pistachio Nuts:	No		

Dietary Information

Key: Suitable for

Suitable for Vegetarian	May not be suitable for Vegan	May not be suitable for Kosher	May not be suitable for Halal
-------------------------	-------------------------------	--------------------------------	-------------------------------

Label Information

Ingredients

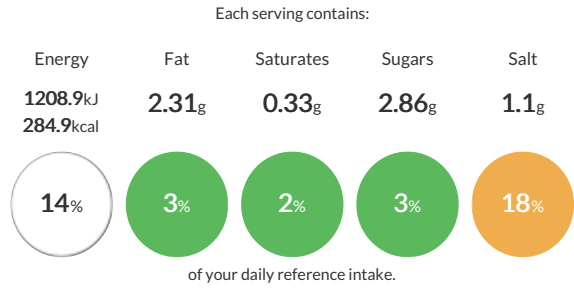
CSBC 10418 - 60 Panini 110g (100%) (WHEAT Flour, Water, Yeast, Salt, Olive Oil, WHEAT Gluten, Malted WHEAT Flour, Flour Treatment Agent (Ascorbic Acid)).

Method & Recipe Notes

The information on the Erudus System has been supplied by the manufacturers of the products and, whilst the owners of the Erudus System take steps to ensure the information is regularly updated, they give no warranty and no guarantee that the information is accurate. Product information and ingredients may change, please always read product labels carefully in addition to using the information provide by Erudus One.

We do not accept liability for any inaccuracies or incorrect information contained on this site. Please visit <http://www.erudus.com/terms-and-conditions> for full terms and conditions

Reference Intake



Nutritional Summary

Energy	1208.9kJ 284.9kCal
Protein	8.58g
Carbohydrates	58.19g
of which sugars	2.86g
Non Milk Extrinsic Sugars	0g
Fat	2.31g
of which saturates	0.33g
Fibre	3.3g
Salt	1.1g
Sodium	0g
Iron	0mg
Calcium	0mg
Zinc	0mg
Folate	0µg
Vitamin A	0µg
Vitamin C	0mg

360 - PANINI BBQ CHICKEN CHEESE

Ingredients

Product	Quantity
CSBC 10418 - 60 Panini 110g	110.00 g
CSBC 10272 Frozen Chicken Breast Strips 12mm (4 x 2.5kg)	90.00 g
CSBC 10082 Sticky BBQ Sauce 2.27L	60.00 g
CSBC 10370 Shredded Mozzarella Cheese/Cheddar Cheese 70%/30%	56.00 g

Serves: 1

Allergy Information

Key: Contains May Contain

Contains Cereal	Contains Milk	Does Not Contain Eggs	Does Not Contain Peanuts	Does Not Contain Nuts	Does Not Contain Crustaceans	Does Not Contain Mustard
Does Not Contain Fish	Does Not Contain Lupin	May Contain Sesame	Does Not Contain Celery	Does Not Contain Soya	Does Not Contain Molluscs	Contains SO2

Nuts:

Almond Nuts:	No
Hazelnuts:	No
Walnuts:	No
Cashew Nuts:	No
Pecan Nuts:	No
Brazil Nuts:	No
Pistachio Nuts:	No

Cereals:

Wheat:	Yes
Rye:	No
Spelt:	No
Oats:	No
Barley:	No
Kamut:	No

Dietary Information

Key: Suitable for

May not be suitable for Vegetarian	May not be suitable for Vegan	May not be suitable for Kosher	May not be suitable for Halal
---------------------------------------	----------------------------------	-----------------------------------	----------------------------------

Label Information

Ingredients

CSBC 10418 - 60 Panini 110g (35%) (**WHEAT Flour**, Water, Yeast, Salt, Olive Oil, **WHEAT Gluten**, Malted WHEAT Flour, Enzymes, Flour Treatment Agent (Ascorbic Acid)). CSBC 10272 Frozen Chicken Breast Strips 12mm (4 x 2.5kg) (28%) (Chicken, Salt Made with 114g of raw chicken per 100g of finished product). CSBC 10082 Sticky BBQ Sauce 2.27L (19%) (Water, Sugar, Tomato Paste, Spirit Vinegar, Glucose-Fructose Syrup, Modified Maize Starch, Bramley Apple Puree (contains Preservative (**Sodium Metabisulphite**)), Salt, Apple Juice Concentrate, Acidity Regulator (Acetic Acid), Colour (Ammonia Caramel), Smoke Flavourings, Preservative (Potassium Sorbate), Stabiliser (Xanthan Gum), Paprika, Dried Garlic, Dried Onion, Black Pepper, Cayenne Pepper.). CSBC 10370 Shredded Mozzarella Cheese/Cheddar Cheese 70%/30% (18%) (**Mozzarella Cheese** (70%) (**MILK**), **Cheddar Cheese** (30%) (**MILK**), Anti-Caking Agent (Potato Starch)).

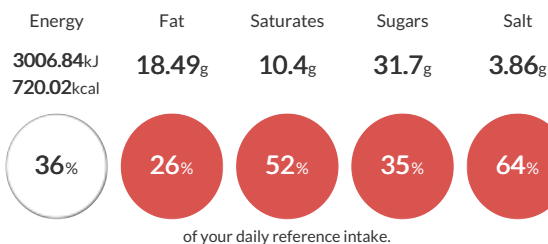
Method & Recipe Notes

The information on the Erudus System has been supplied by the manufacturers of the products and, whilst the owners of the Erudus System take steps to ensure the information is regularly updated, they give no warranty and no guarantee that the information is accurate. Product information and ingredients may change, please always read product labels carefully in addition to using the information provide by Erudus One.

We do not accept liability for any inaccuracies or incorrect information contained on this site. Please visit <http://www.erudus.com/terms-and-conditions> for full terms and conditions

Reference Intake

Each serving contains:



Nutritional Summary

Energy	3006.84kJ 720.02kCal
Protein	49.92g
Carbohydrates	86.43g
of which sugars	31.7g
Non Milk Extrinsic Sugars	0g
Fat	18.49g
of which saturates	10.4g
Fibre	4.13g
Salt	3.86g
Sodium	0.83g
Iron	0mg
Calcium	0mg
Zinc	0mg
Folate	0µg
Vitamin A	0µg
Vitamin C	0mg

360 - PANINI CHEESE AND HAM

Ingredients

Product	Quantity
CSBC 10418 - 60 Panini 110g	110.00 g
CSBC 10370 Shredded Mozzarella Cheese/Cheddar Cheese 70%/30%	56.00 g
Sliced Premium Honey Roast Ham (500g)	100.00 g

Serves: 1

Allergy Information

Key: Contains May Contain

Contains Cereal	Contains Milk	Does Not Contain Eggs	Does Not Contain Peanuts	Does Not Contain Nuts	Does Not Contain Crustaceans	Does Not Contain Mustard
Does Not Contain Fish	Does Not Contain Lupin	May Contain Sesame	Does Not Contain Celery	Does Not Contain Soya	Does Not Contain Molluscs	Does Not Contain SO2

Nuts:		Cereals:	
Almond Nuts:	No	Wheat:	Yes
Hazelnuts:	No	Rye:	No
Walnuts:	No	Spelt:	No
Cashew Nuts:	No	Oats:	No
Pecan Nuts:	No	Barley:	No
Brazil Nuts:	No	Kamut:	No
Pistachio Nuts:	No		

Dietary Information

Key: Suitable for

May not be suitable for Vegetarian	May not be suitable for Vegan	May not be suitable for Kosher	May not be suitable for Halal
------------------------------------	-------------------------------	--------------------------------	-------------------------------

Label Information

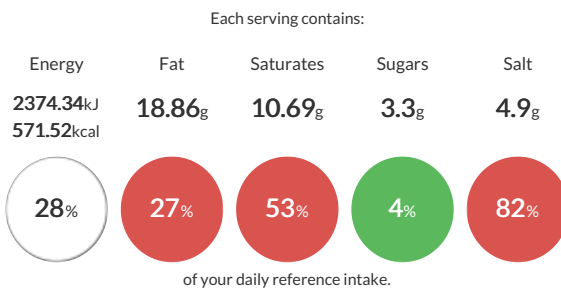
Ingredients
 CSBC 10418 - 60 Panini 110g (41%) (**WHEAT Flour**, Water, Yeast, Salt, Olive Oil, **WHEAT Gluten**, Malted WHEAT Flour, Enzymes, Flour Treatment Agent (Ascorbic Acid)). Sliced Premium Honey Roast Ham (500g) (38%) (EU Pork (85%), Water, Salt, Dried Glucose Syrup, Stabilisers (E451, E450, E452), Honey (0.2%), Demerara sugar, Antioxidant (E301), Preservative (E250)). CSBC 10370 Shredded Mozzarella Cheese/**Cheddar Cheese** 70%/30% (21%) (**Mozzarella Cheese** (70%) (**MILK**), **Cheddar Cheese** (30%) (**MILK**), Anti-Caking Agent (Potato Starch)).

Method & Recipe Notes

The information on the Erudus System has been supplied by the manufacturers of the products and, whilst the owners of the Erudus System take steps to ensure the information is regularly updated, they give no warranty and no guarantee that the information is accurate. Product information and ingredients may change, please always read product labels carefully in addition to using the information provide by Erudus One.

We do not accept liability for any inaccuracies or incorrect information contained on this site. Please visit <http://www.erudus.com/terms-and-conditions> for full terms and conditions

Reference Intake



Nutritional Summary

Energy	2374.34kJ 571.52kCal
Protein	41.3g
Carbohydrates	57.31g
of which sugars	3.3g
Non Milk Extrinsic Sugars	0g
Fat	18.86g
of which saturates	10.69g
Fibre	2.85g
Salt	4.9g
Sodium	0.58g
Iron	0mg
Calcium	0mg
Zinc	0mg
Folate	0µg
Vitamin A	0µg
Vitamin C	0mg

360 - PANINI TUNA MAYO

Ingredients

Product	Quantity
CSBC 10418 - 60 Panini 110g	110.00 g
CSBC 11116 Skipjack Tuna Chunks in Brine	70.00 g
CSBC 10057 Real Mayonnaise 5l	35.00 g
CSBC 10370 Shredded Mozzarella Cheese/Cheddar Cheese 70%/30%	56.00 g

Serves: 1

Allergy Information

Key: Contains May Contain

 Contains Cereal	 Contains Milk	 Contains Eggs	 Does Not Contain Peanuts	 Does Not Contain Nuts	 Does Not Contain Crustaceans	 Does Not Contain Mustard
 Contains Fish	 Does Not Contain Lupin	 May Contain Sesame	 Does Not Contain Celery	 Does Not Contain Soya	 Does Not Contain Molluscs	 Does Not Contain SO2

Nuts:

Almond Nuts:	No
Hazelnuts:	No
Walnuts:	No
Cashew Nuts:	No
Pecan Nuts:	No
Brazil Nuts:	No
Pistachio Nuts:	No

Cereals:

Wheat:	Yes
Rye:	No
Spelt:	No
Oats:	No
Barley:	No
Kamut:	No

Dietary Information

Key: Suitable for

 May not be suitable for Vegetarian	 May not be suitable for Vegan	 May not be suitable for Kosher	 May not be suitable for Halal
--	---	--	---

Label Information

Ingredients

CSBC 10418 - 60 Panini 110g (41%) (**WHEAT Flour**, Water, Yeast, Salt, Olive Oil, **WHEAT Gluten**, Malted WHEAT Flour, Enzymes, Flour Treatment Agent (Ascorbic Acid)). CSBC 11116 Skipjack Tuna Chunks in Brine (26%) (Skipjack Tuna (katsuwonus pelamis)(**FISH**), Water, Salt). CSBC 10370 Shredded Mozzarella Cheese/**Cheddar Cheese** 70%/30% (21%) (**Mozzarella Cheese** (70%) (**MILK**), **Cheddar Cheese** (30%) (**MILK**), Anti-Caking Agent (Potato Starch)). CSBC 10057 Real Mayonnaise 5l (13%) (Rapeseed oil, Water, Spirit Vinegar, Stabilisers (Modified Potato Starch, Xanthan Gum), Sugar, Salt, Pasteurised EGG, Preservative (Potassium sorbate)).

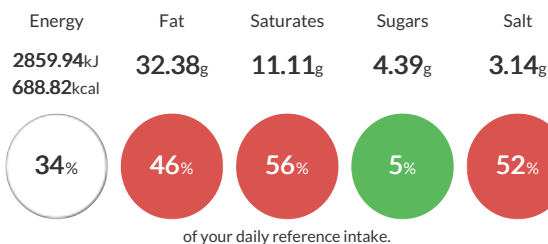
Method & Recipe Notes

The information on the Erudus System has been supplied by the manufacturers of the products and, whilst the owners of the Erudus System take steps to ensure the information is regularly updated, they give no warranty and no guarantee that the information is accurate. Product information and ingredients may change, please always read product labels carefully in addition to using the information provided by Erudus One.

We do not accept liability for any inaccuracies or incorrect information contained on this site. Please visit <http://www.erudus.com/terms-and-conditions> for full terms and conditions

Reference Intake

Each serving contains:



Nutritional Summary

Energy	2859.94kJ 688.82kCal
Protein	38.79g
Carbohydrates	59.45g
of which sugars	4.39g
Non Milk Extrinsic Sugars	0g
Fat	32.38g
of which saturates	11.11g
Fibre	2.93g
Salt	3.14g
Sodium	0.69g
Iron	0.7mg
Calcium	5.6mg
Zinc	0.49mg
Folate	0µg
Vitamin A	0µg
Vitamin C	0mg